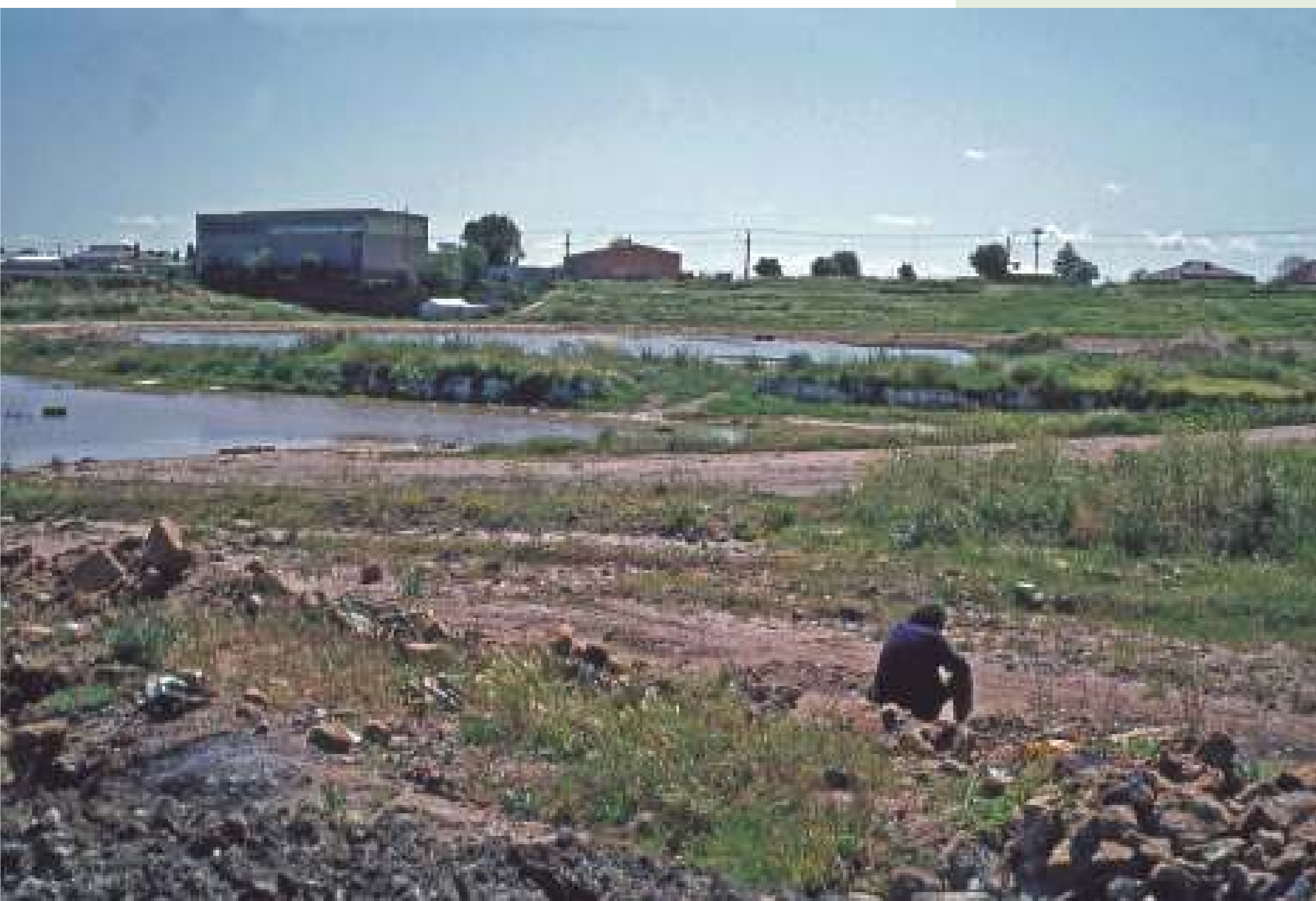


# Redevelopment of Hindmarsh & the Community Response 1983/1984



▲ Rowley Park, winter 1986

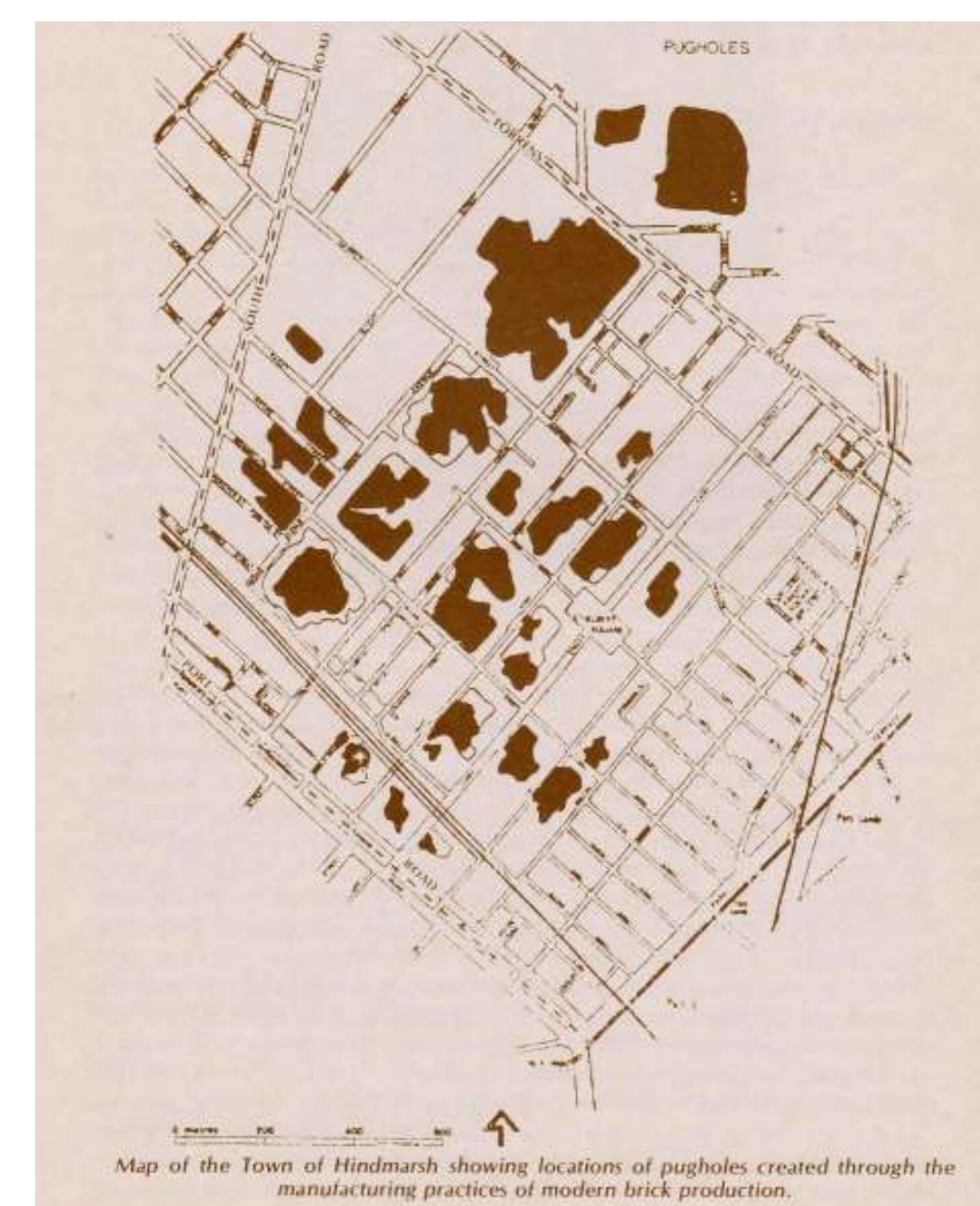
## After European Colonisation Hindmarsh Becomes Pughole Country

In 1839 land in Bowden was made available by lottery and advertised as having "clay very suitable for brickmaking". (Parsons, Ronald. Hindmarsh Town, Corporation of the Town of Hindmarsh, Adelaide, October 1974. p.15)

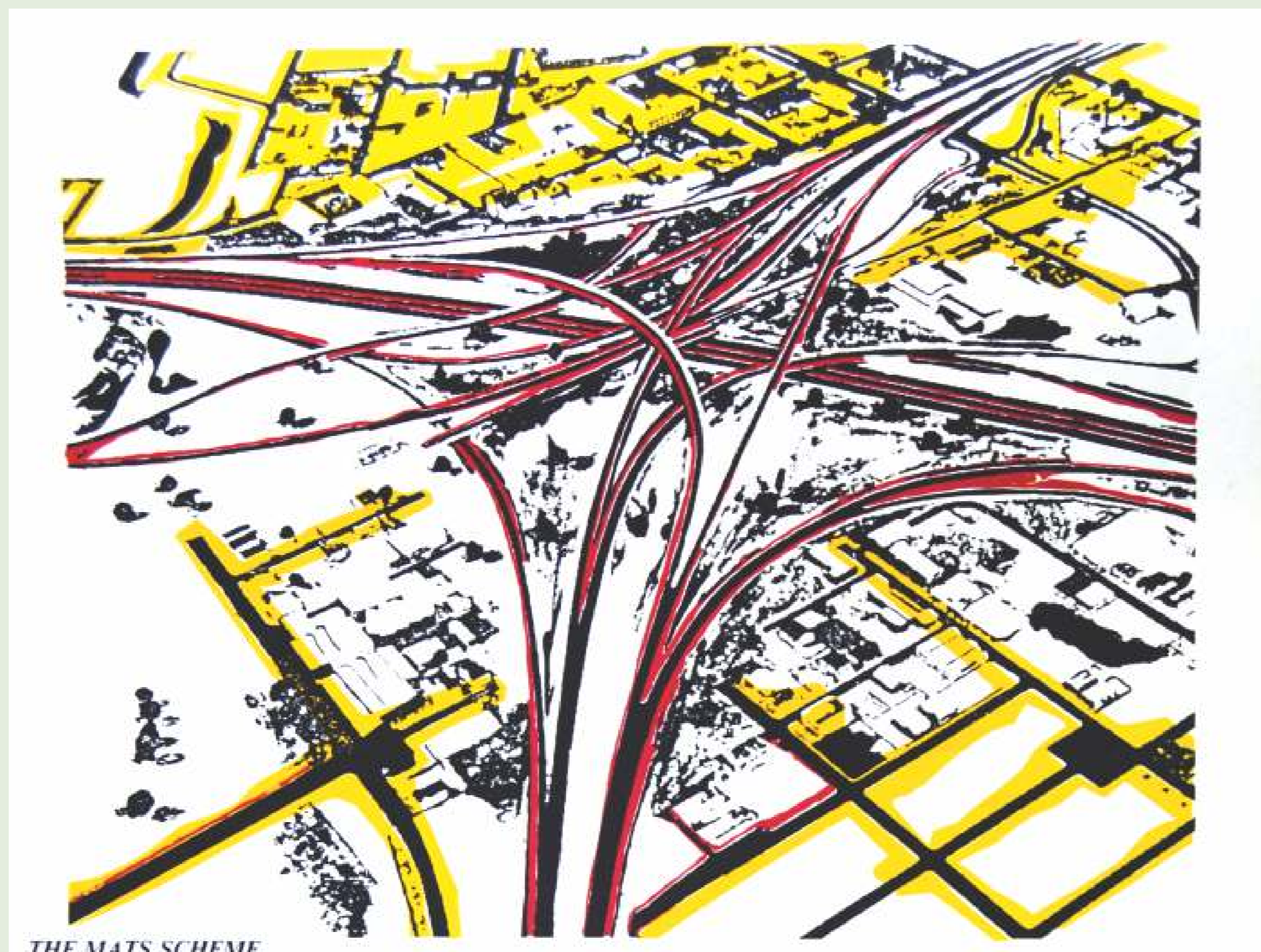
Extracting clay for brick making purposes in colonial Adelaide created deep red pits — pugholes — "initially dug by the hands of 'independent' small family landholders in the backyards of small two roomed workers' cottages". (Riddle, Ann. People of the Pugholes. In the Town of Hindmarsh 1836-1986, Town of Hindmarsh Jubilee 150 Community Committee, Hindmarsh, 1986, p. 2)

Over time claypits merged and grew larger, as owners and brickmakers like Shearing after 1839 and then Hallett's in the late nineteenth century, consolidated holdings.

Eventually pugholes punctured the indigenous landscapes of Bowden, Brompton and Ridleyton. When exhausted they became rubbish tips and toxic sites.



Map of the Town of Hindmarsh showing location of pugholes created through the manufacturing practices of modern brick production.



**THE MATS SCHEME**  
In 1968, the announcement of the North-South Corridor as part of the MATS freeway plan accelerated housing decline as the Highways Department claimed land for road building. As homes were vacated, they were then leased to small industry on a short term basis. Population declined by 41% and over 500 families were forced out of the area. Had the MATS plan not even come — it was scrapped in 1983 — was it of no benefit to those families who were moved out. Not was it of any benefit to those who stayed, because the plan overshadows any ideas of long term development or improvement as indeed it had been doing for almost 20 years.

## The Metropolitan Adelaide Transportation Study – the MATS Plan – Hindmarsh Interchange

In 1968 Thomas Playford's Liberal and Country League State Government announcement of a transport study appeared to seal the future of Hindmarsh and its pugholes alike.

It heralded a freeway system along with a four level interchange proposed to shadow dead set above Bowden and Brompton in Hindmarsh Town. It would impose over Adelaide's historically most un-venerated and un-celebrated first working class districts and totally wipe them out.

The pre-existence of pugholes, small and some noxious industries surrounded by degraded housing

encouraged government to adopt the MATS plan. Local residential communities were considered expendable. The Highways Department commenced procuring land for a corridor and housing was lost. Subsequently more industry with associated heavy transport needs moved into the narrow, poorly drained and maintained streets of Bowden, Brompton and Ridleyton, pounding the streets ever more. Council needed industry's rates as between 1961-1981 MATS had decreased the residential population of Hindmarsh by 41%.

## The Groups

In the 1970s, the *Henderson Poverty Report* released federal financial resources targeting particular regions, Hindmarsh being one. By the 1980s the **Bowden Brompton Community Group**, established in 1972 as the Hindmarsh Action Group, had grown around it other groups in the town. Groupings such as the **Bowden Residents Group**, the **Brompton Park Residents Group** and by 1980, the **Hindmarsh Residents Association**. The **Hindmarsh Pughole** community newspaper commenced publishing the same year and residents developed an independent voice. The **Hindmarsh Housing Association** incorporated in 1981. And the **Bowden Brompton Community Legal Service** established at the Community Centre at 131 Coglein Street Brompton the same year. In 1983 the permaculture group working on the Green Street Playground transformed into the community based **Urban Permaculture Consultants**.

Through these groups and other local organisations, residents organised to oppose Government goals in Hindmarsh, industry's lobbying groups and regrettably, the Hindmarsh Council's apparent intransigence towards residents' concerns.

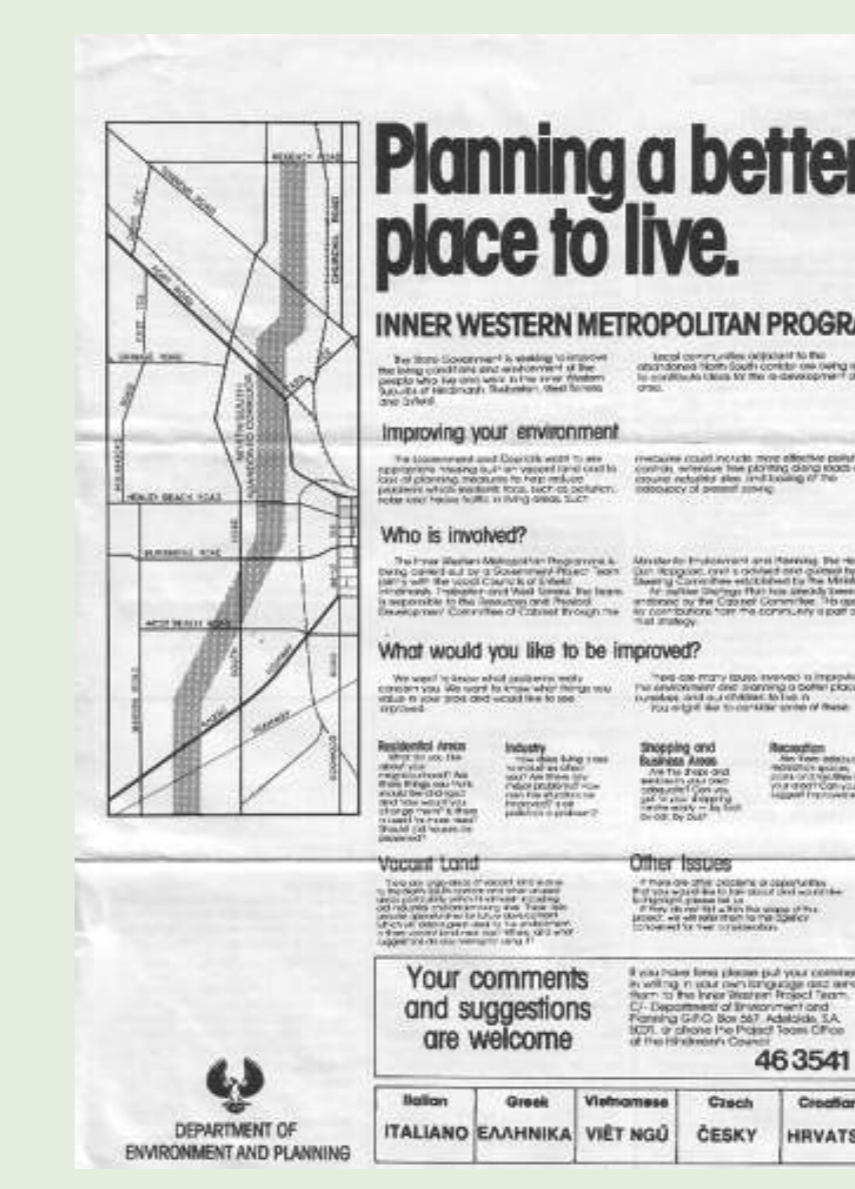


## MATS Plan Out

In June 1983 Roy Abbott, Minister for Transport in the new John Bannon State Labor Government, announced the abandonment of MATS by removing the corridor from the Metropolitan Development Plan.

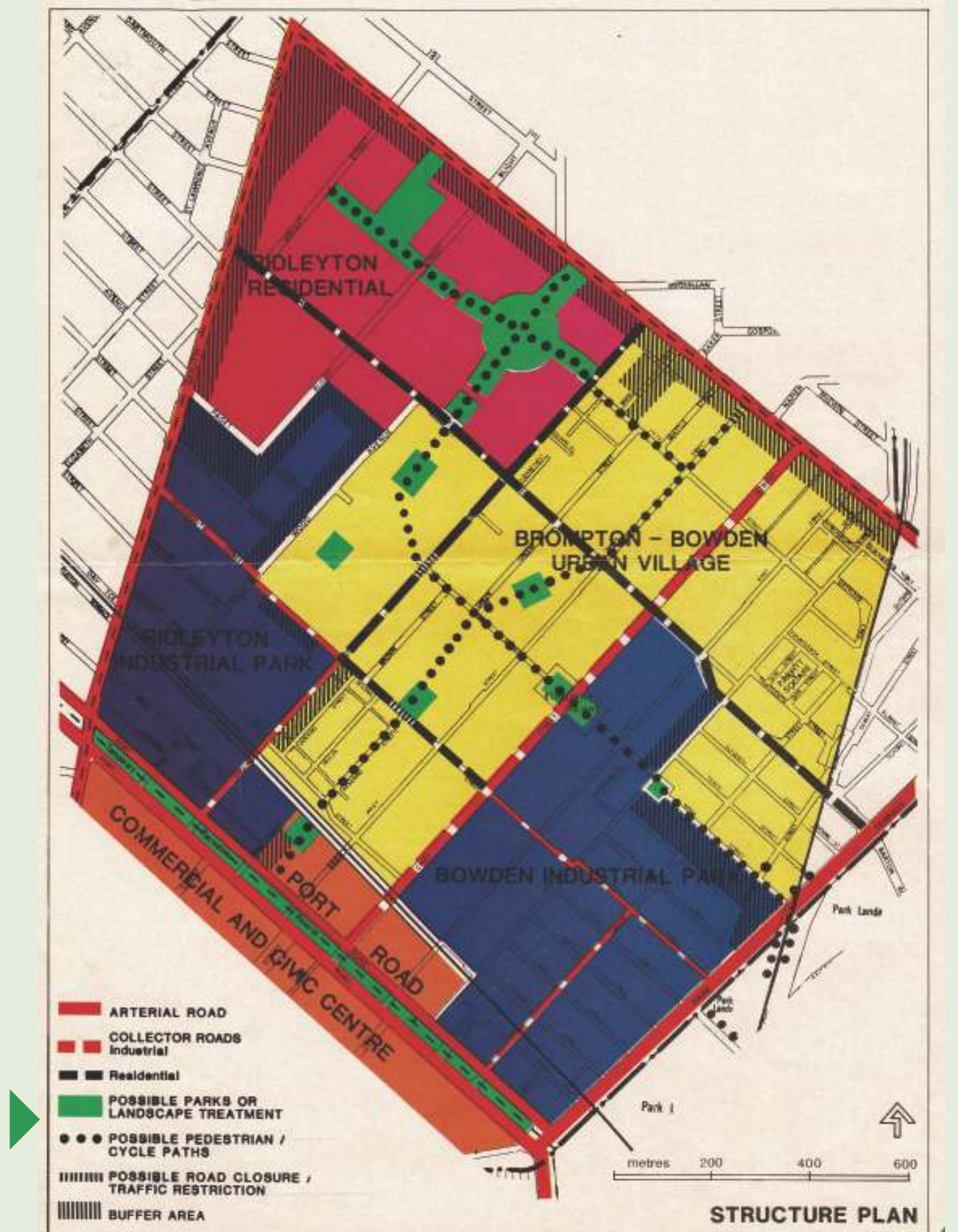
A few days later, Minister for Environment and Planning, Dr. Don Hoggood announced plans to bring housing back to the inner western suburbs. This would entail:

- A New Planning Act
- A Housing Redevelopment for Hindmarsh
- Developing Supplementary Development Plans
- A Resolution of Conflict between Residents and Industry



Information brochure – Inner Western Metropolitan Program, Department of Environment and Planning, November 1983

Inner Western Metropolitan Program Structure Plan. Bowden-Brompton-Ridleyton Draft Strategy Plan - July 1984 (from Planning a Better Place to Live)



## The Community Strategy Plan – The Document

Representing the stated needs of residents derived from discussions, surveys and consultations over many years (as recorded in *The Hindmarsh Pughole* community newspaper from 1981 onwards) local activists replied to a State Government Draft Strategy Plan.

They formed the Community Planning Group, a representative committee from the various residents groups.

The Community Planning Group, developed the Community Strategy Plan. This detailed alternative redevelopment strategies for the Study Area of Bowden, Brompton and Ridleyton

In its Summary of Recommendations - Aims and Objectives, 1.1 states:

## Controversial Draft Strategy – Solomon's Curse

The Inner Western Metropolitan Program was a State Government's inter- departmental body established to run the redevelopment. It established the Inner Western Metropolitan Working Group. That defined the Study Area as Bowden, Brompton and Ridleyton.

In July 1984 the Program released a green coloured broadsheet stating "the South Australian Government and Hindmarsh Council are looking at ways and means to improve the quality of life and environment for people living and working in the Bowden, Brompton & Ridleyton parts of Hindmarsh".

It contained Recommendations for the future development of Bowden, Brompton and Ridleyton. But the area is cut it in half, a compromise like King Solomon's solution and neither residents nor industry were happy.

"The whole of the Study Area to be rezoned residential (Map 1) except where otherwise indicated in the plan."

- This is to be a primary demand of the Community Planning Group. Other Objectives were:
- Provide wide range of housing for diverse groups
  - Phase out polluting industries
  - Maintain the historical character of traditional multicultural working class groups, with no gentrification
  - Utilize environmentally sound strategies
  - Ensure basic services in proximity, reduce motor vehicles
  - Economic and social independence
  - Encourage resident participation in planning.

# Alternative Plan, Community Consultation & Permaculture



## The Community Strategy Plan – The Alternative Plan

The Alternative Plan is the Concept Plan created by the Urban Permaculture Consultants (UPC) in January 1984 shortly after the community consultation period ended. It is the merged Study Area and the pughole map devised by the Inner Western Metropolitan Working Group. It illustrates the Aims and Objectives 1.1 of total residential zoning.

Exceptionally it retains the historical pughole sites of Hindmarsh as open Greenspaces linked by bicycle and walkways, thus creating a unique urban renewal strategy plus environmental rehabilitation. Traditional working class and multicultural residents benefit with the resulting amenity improvement.



## Permaculture is Permanent Culture/Systems Thinking

### WHOLISTIC DESIGN

- For sustainability,
- In the environment,
- And human managed support systems: like cities

### ETHICS

- Care for Earth, Care of People, Share Surplus Fairly

### UNIVERSAL PRINCIPLES

- Entropy – Thermodynamics,
- Ecologically rational,
- Respects the Living Biosphere as found in Indigenous Ways of Being

In 1983 there were only two main texts - Permaculture One by Bill Mollison and David Holmgren and Permaculture Two by Mollison.

However, Mollison had initiated the Permaculture Designer's Course, a 2-4 week intensive learning experience to obtain his Permaculture Design Certificate. These courses are still the basic formal learning experience but there are also some Certificate 3 and 4 levels in Australia. Mollison died in 2016 but Holmgren continues to educate. Many other practitioners and educators abound.

## Integral Urban Neighbourhood - the Alternative Plan

UPC participated in community consultations, collected and analysed as much data as possible between November 1983 and January 1984.

In February 1984 they unveiled their Integral Urban Neighbourhood concept at the second Australian Institute of Urban Studies Seminar in the Hindmarsh Town Hall.

UPC hijacked the foyer with their display and jumped the Inner Western Metropolitan Team's plans. It looked so good that some guests (town planning buffs) thought it was the government plan.

This was guerilla action based on Hindmarsh community activist precedents such as picketing premises, restoring and squatting in condemned dwellings and burning effigies of government ministers. UPC became known by some government officials as "the Urban Troublemakers".

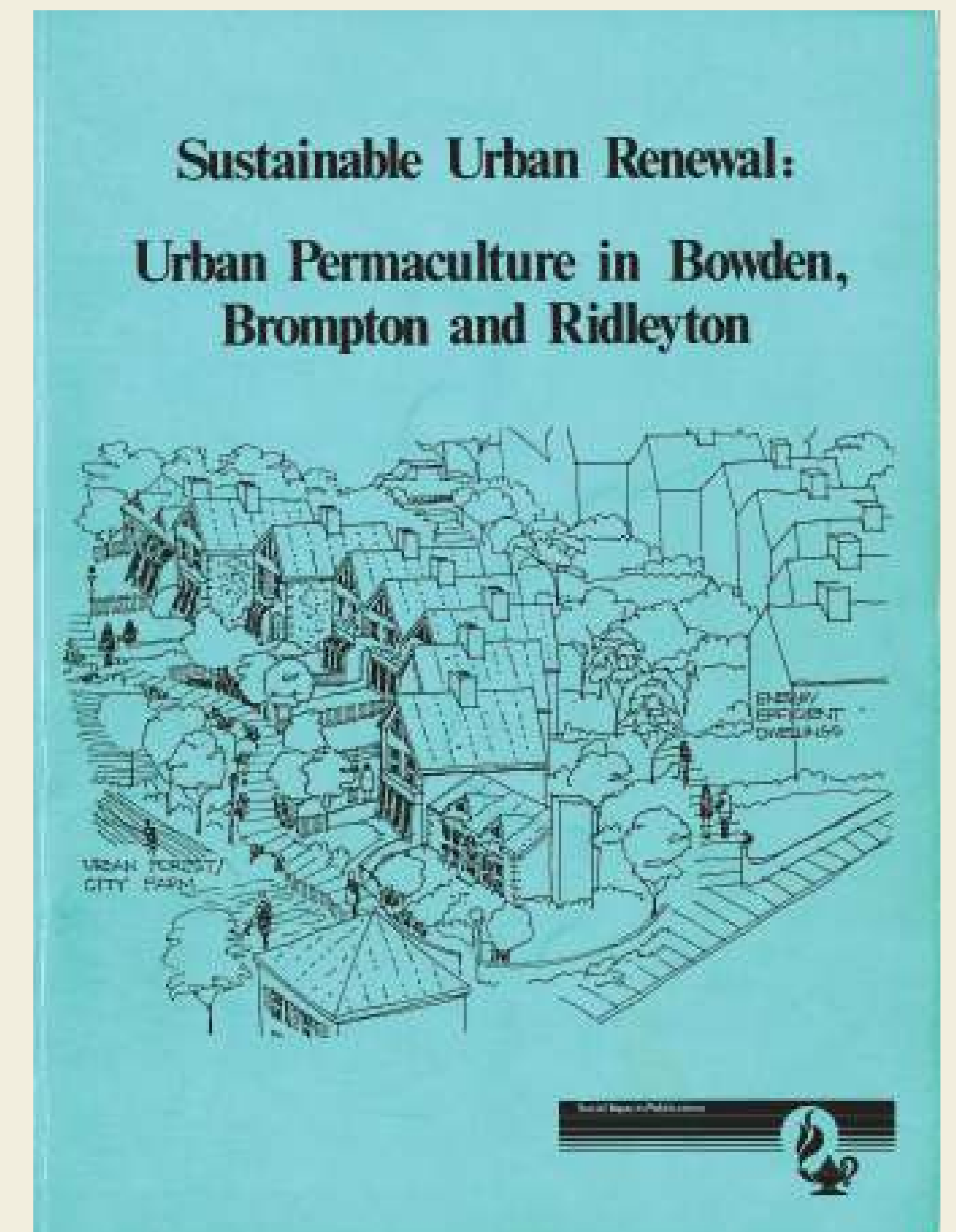
The Integral Urban Neighbourhood is holistic design, a synergistic integration of services and infrastructure for community development, a methodology towards self-sustaining and self-reliant communities.

The concept is articulated in Sustainable Urban Renewal Urban Permaculture in Bowden, Brompton and Ridleyton, Ball, C. Jervis, G, Mansell, B. and Okamoto, P. (Social Impacts Publications in Association with Permaculture Association of South Australia, Armidale, 1985).

Sustainable Urban Renewal as Integral Urban Neighbourhood has six strategy areas. These are: Housing, Urban Forestry & City Farming, Recycling, Community Infrastructure, Environmental Education and Sustainable Employment.

It builds on ideas found in US (eg. A Better Place To Live), Russian, German and Australian (eg. Seeds For Change) studies and examples. Diverse examples from ecological architecture, transport and energy systems, urban forestry, community gardening, city farms, organic horticulture and large scale recycling strategies.

The UPC proposal is an amalgam of design resources and ideas uniquely applicable to the Study Area.



## Community Consultation Process

In November and December 1983 a series of street meetings and open community forums were organised by the Community Planning Group to seek residents' views in Hindmarsh, Brompton Park, Brompton, Bowden, Ridleyton and Renown Park. The Inner Western Metropolitan Working Team was obliged to attend.

## meeting : brompton park residents

"All residents of Brompton Park are cordially invited to a meeting with Mr. Gavin Lloyd-Jones, who is a Government officer working with the Redevelopment Project Team responsible for Government and Council planning in the former MATS corridor.

Mr. Lloyd-Jones is keen to take note of residents' wishes for the future of Brompton Park.

The meeting will commence at 6.30pm, Wednesday 23 November (1983) in the Parlour, Brompton Park Hotel."

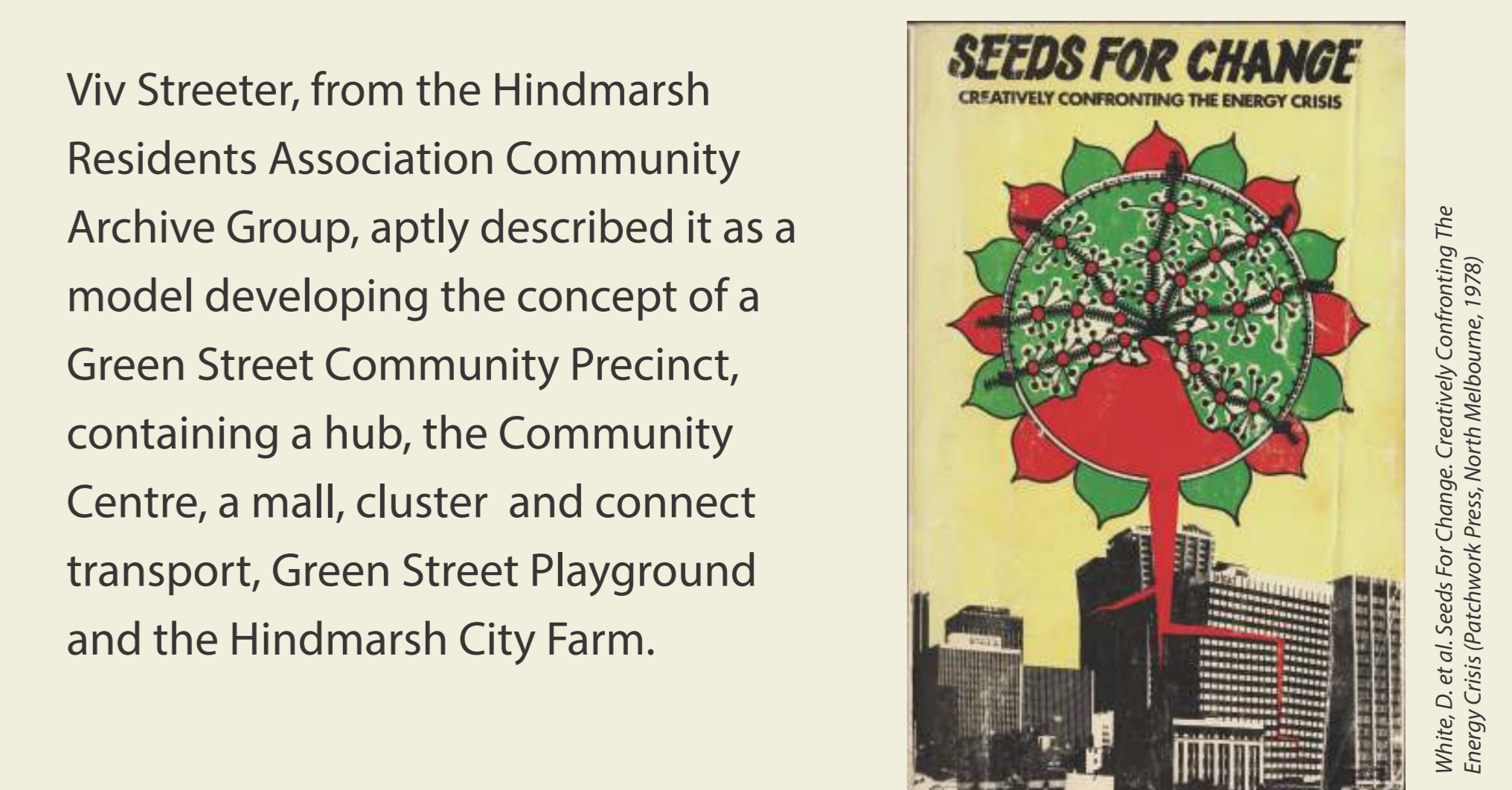
## The Urban Permaculture Consultants - a Fusion of Community and Permaculture

The Urban Permaculture Consultants (UPC) were local people, workers, volunteers and activists who worked together with residents groups, as one voice, to develop the Alternative Plan. They were the antithesis of the well remunerated corporate consultants who came briefly, produced reports on the past and future of the area, and then left.

Bowden Brompton Community Centre Coordinator Phil Watson, was the pivot between the residents groups, users of the Centre, non-government and government sectors. Another key local activist was Pauline Walton, a Brompton Park resident, member of Brompton Park Residents Group, Hindmarsh Residents Association, Bowden Brompton Community Group and liaison with the Hindmarsh Housing Association.

The permaculture design group were:

- Colin Ball – a Bowden resident, Permaculture Design Certificate graduate, ex-Flinders University Arts student
- Greg Jervis – a West Croydon resident, Permaculture Design Certificate graduate, ex -Flinders University Arts student
- Bill Mansell – West Croydon resident, Flinders University Arts/Education student
- Paul Okamoto, aka "the Young Californian", Bachelor of Architecture, California Polytechnic State University 1981, Masters of Architecture student, Adelaide University 1983.



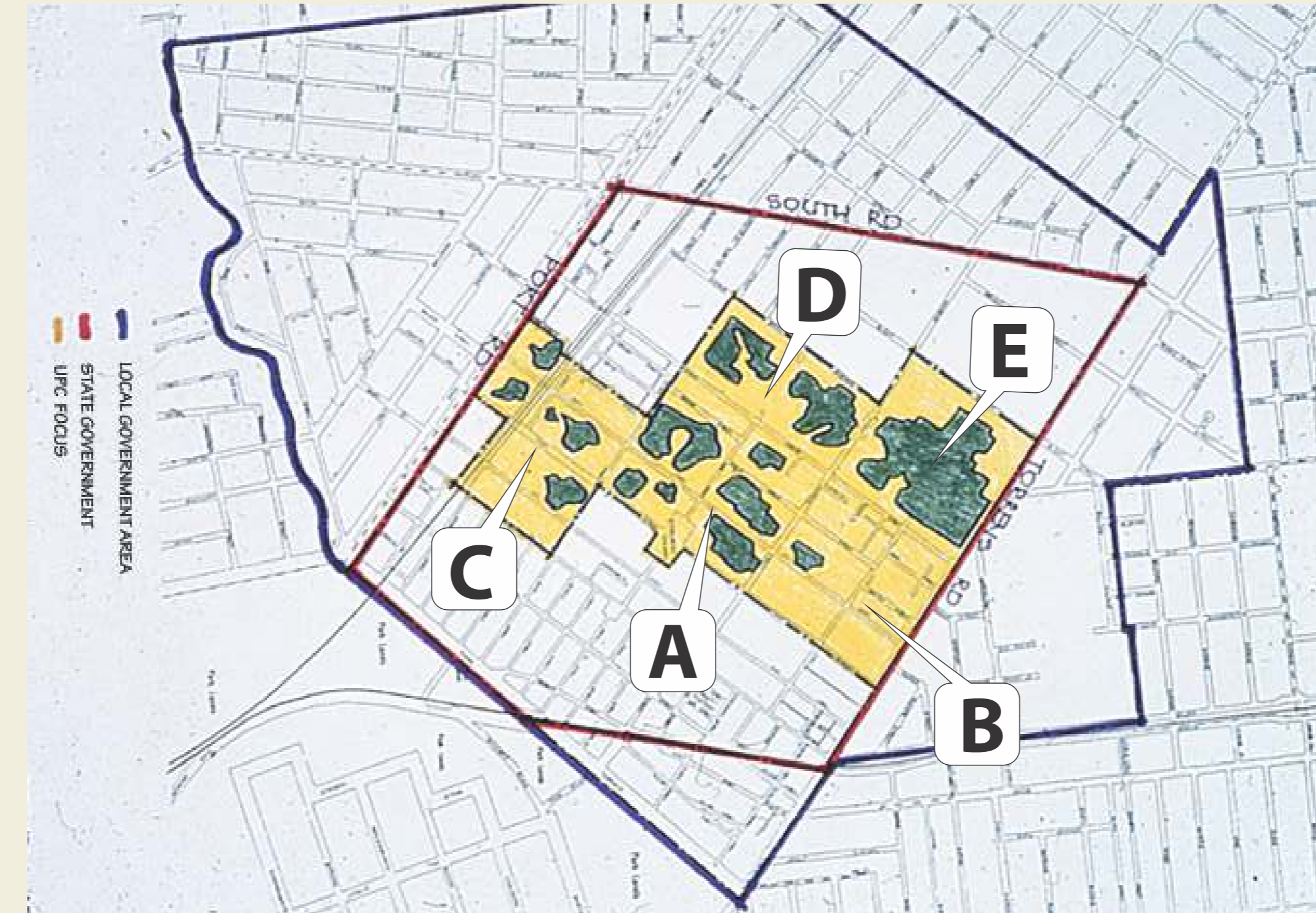
# The Concept Plans

## APPENDIX A: CONCEPTUAL DESIGN FOR REDEVELOPMENT



## Conceptual Design for Redevelopment

The UPC overall Concept Plan contains a predominant residential option. This includes the community desire for low-cost affordable housing, the re-location of inappropriate industries and adds Urban Permaculture design for sustainable living – the strategy of integral urban neighbourhood with community foci. The Alternative Plan for the re-development of Bowden, Brompton and Ridleyton contains five sections, "A" to "E".



## Site Plan Section "A" – Community Foci – Green Street Community Precinct

Section "A" is the Green Street Community Precinct between Hawker, Third Street, Green Street and West Street. It contains social housing development (in yellow), existing housing in blue and commercial activity in purple), an energy efficient new build Community Centre on Third Street Brompton, adjacent the Green Street Playground and the proposed City Farms on Green and West Streets pughole sites.

The concept demonstrates the interconnections between social housing, urban forestry, intensive food gardens and community infrastructure by and for local people. It shows how valuing the environment, community well-being,

social diversity, access, inclusion and disadvantage were key principles that guided the thinking.

It is a unique design for the future of Bowden, Brompton and Ridleyton. In linking housing, a community precinct, bikeways, walkways, green corridors through pughole sites, trees as pollution buffers, urban food production systems – city farming, community gardening, edible landscaping – the foundation was developed for building community capacity, a healthy environment and making Hindmarsh an innovative and resilient area heading towards the 21st century.

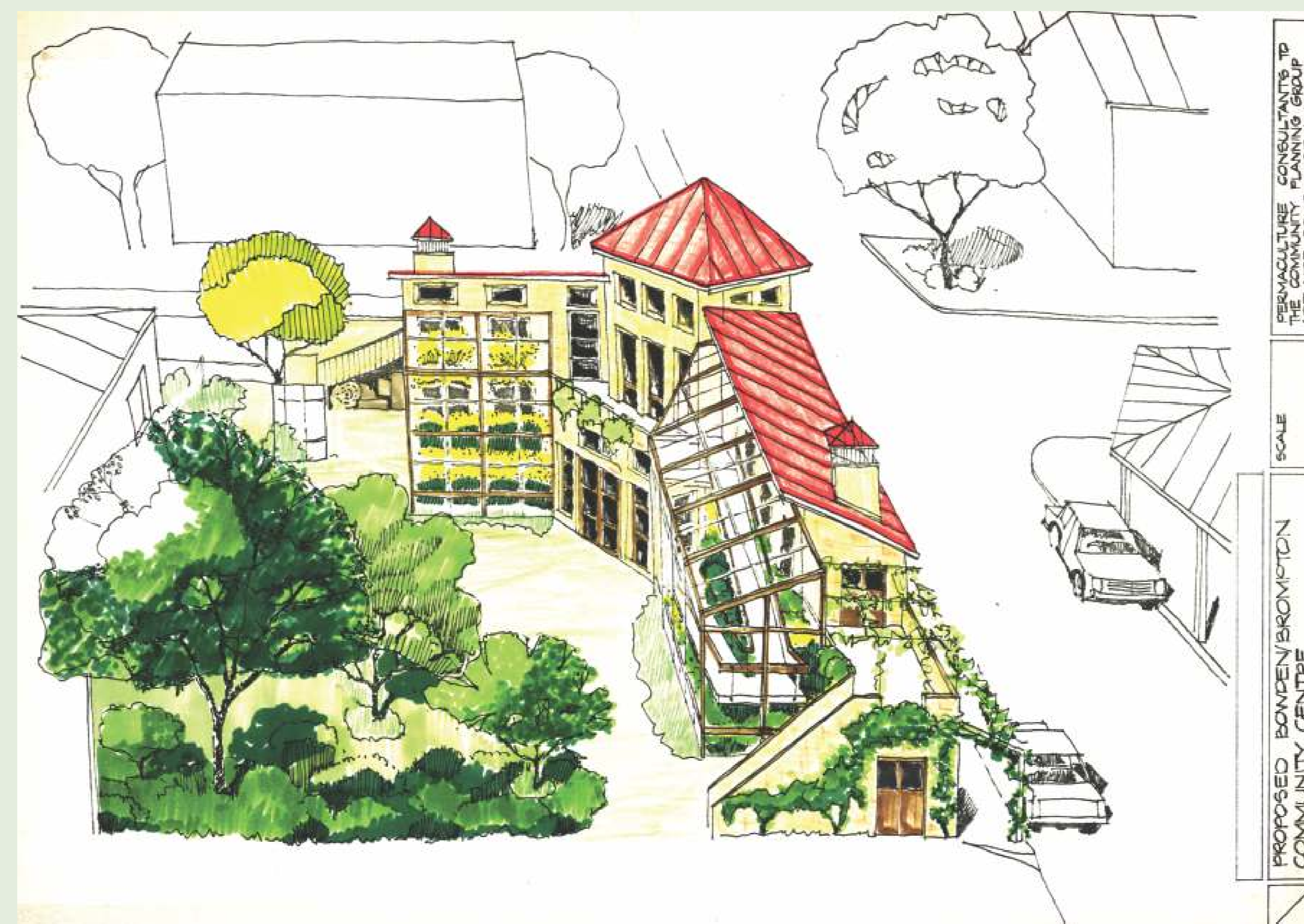
## Proposed New Community Centre

Consultation was undertaken by the UPC with members and local users of the existing Bowden Brompton Community Centre in Coglein Street Brompton in late 1983. Centre Coordinator, Phil Watson, wanted to make sure that the Group could respond to the opportunity created by the State Government's grand scheme.

The design is a two-storey north facing building with mezzanine to accommodate reception, a food cooperative, kitchen, multiple office spaces, indoor and external

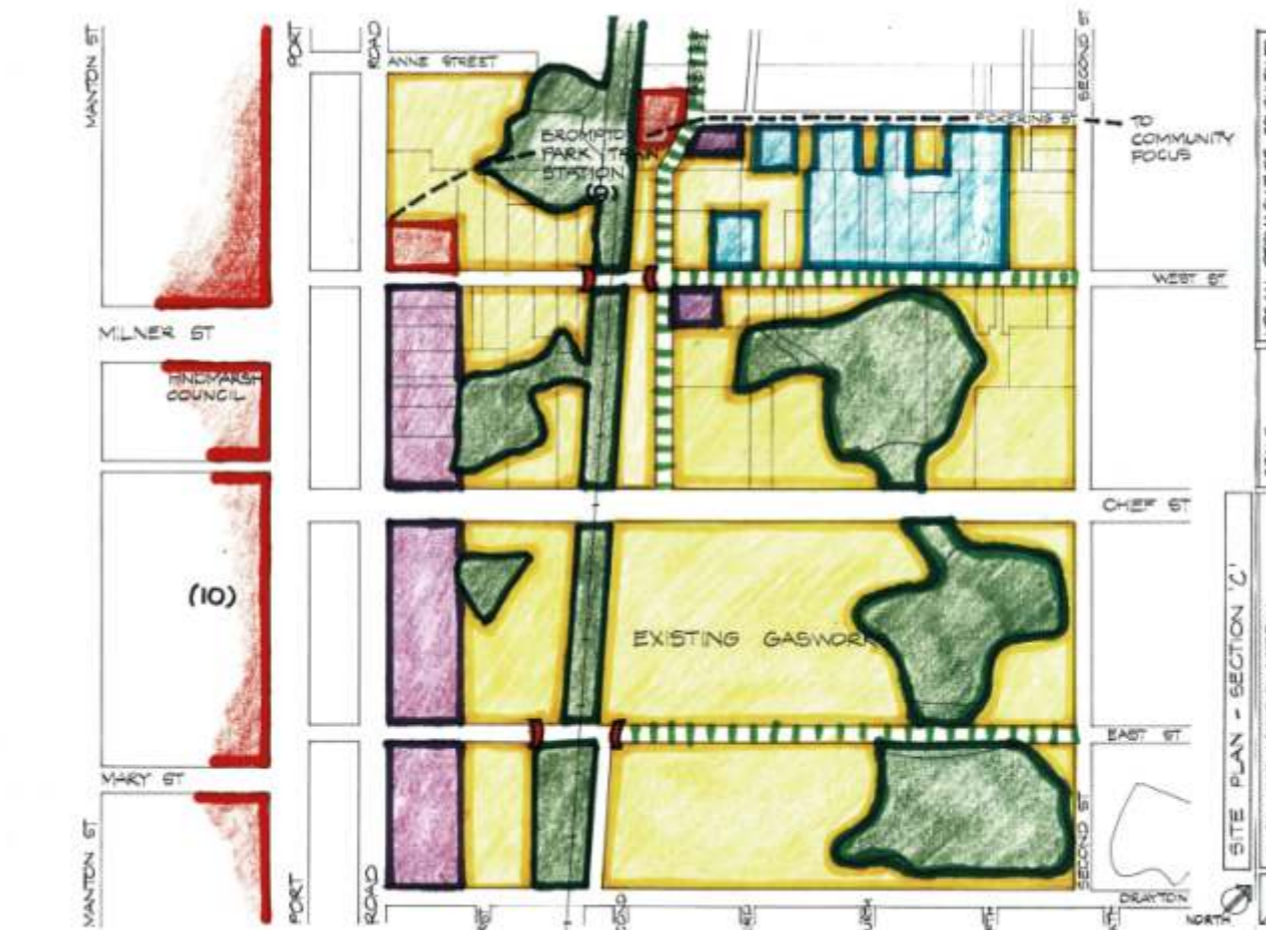
workshops, greenhouse enclosed ramp to upper storey, a sundeck and solarium on the northern side, veranda, shade-housing and vines on the southern aspect. A northern garden zone extending into Urban Forest connects into the Playground and City Farm.

Both West and Third Streets are closed off to create an open malled zone where locals can connect to public transport options.



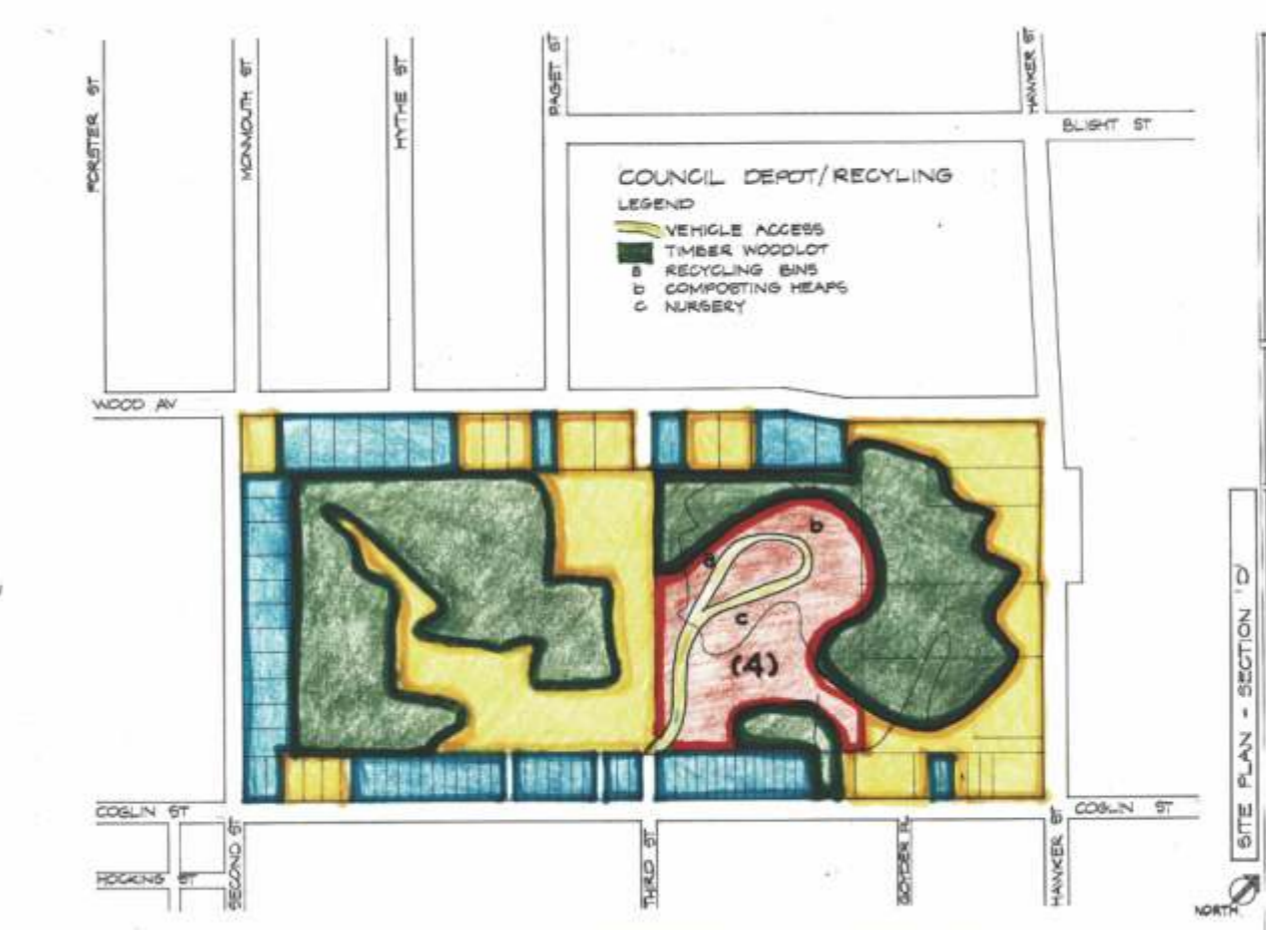
## Site Plan Section "B" – Torrens Road

The northern end of Brompton adjacent to the Bowden Brompton Community School.



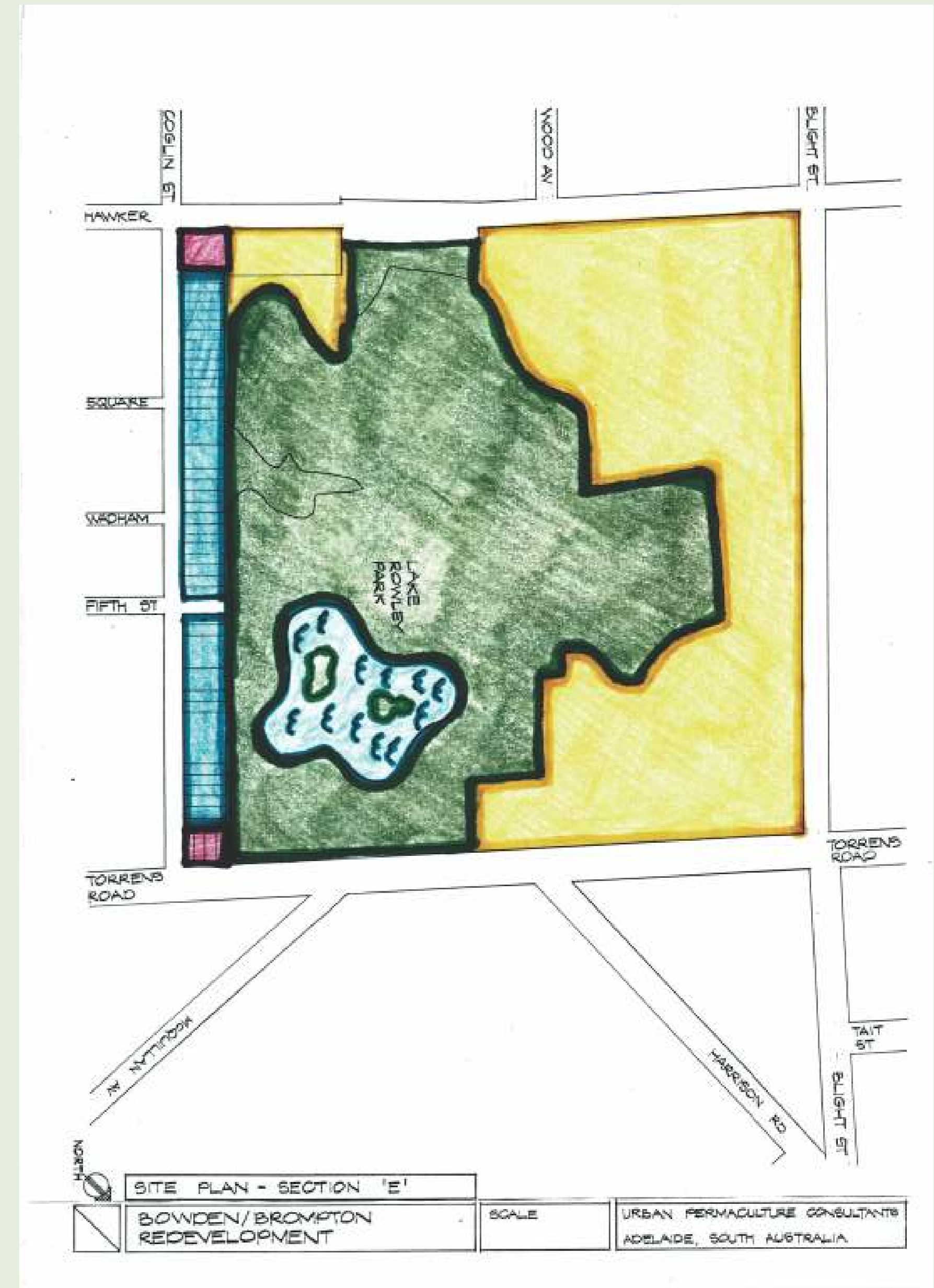
## Site Plan Section "C" – Brompton Park

A Drop-in Centre and Railway Station.



## Site Plan Section "D" – Recycling Depot

Proposed Recycling System at Council's Work Depot off of Coglein Street Brompton.



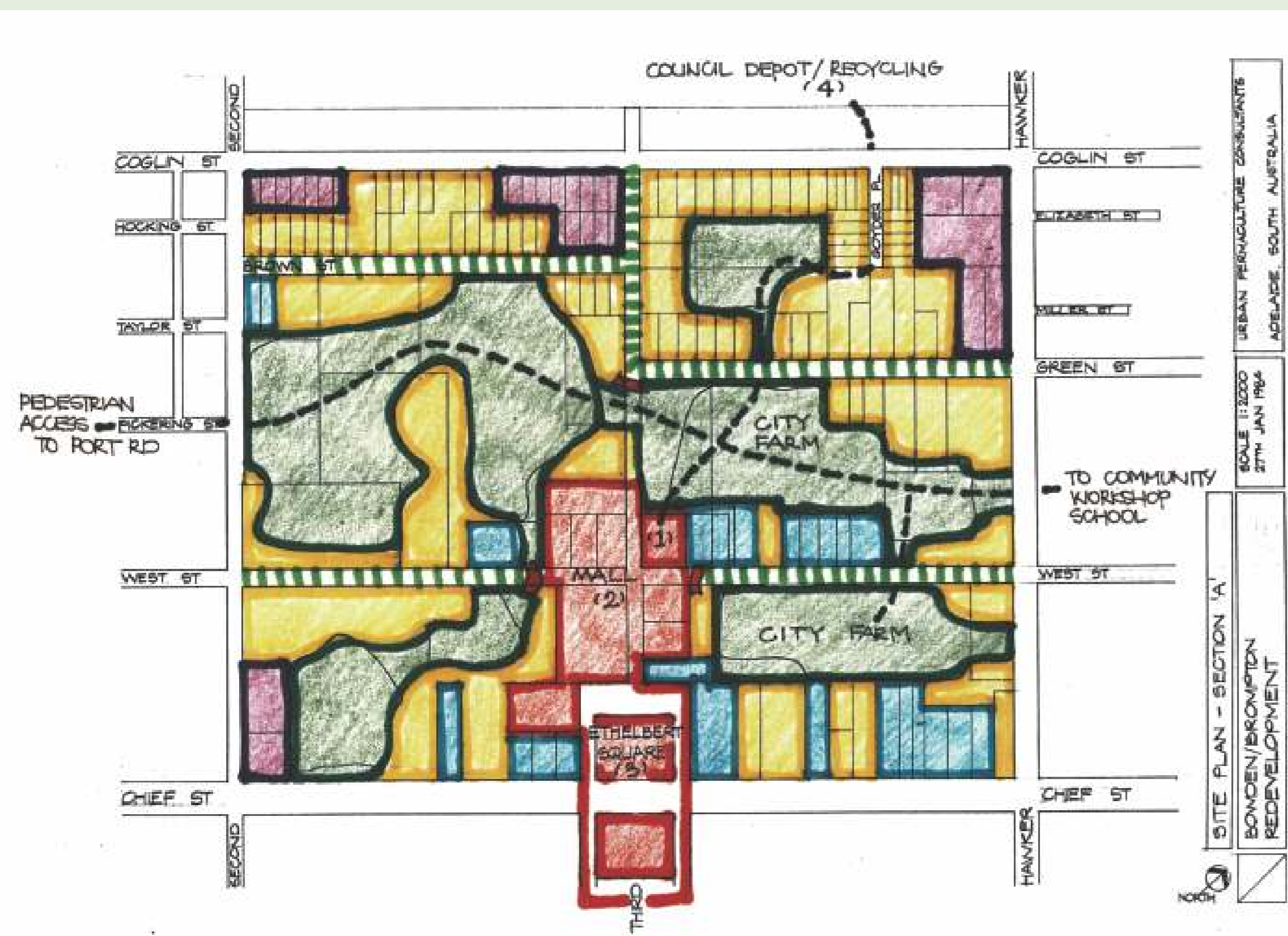
## Site Plan Section "E"- Lake Rowley Park

This was an exciting potential to create an urban lake in the large pughole on Torrens Road. Previously it was a Hallett's Brickworks site which was sold to the Hindmarsh Council in about 1941. When an effort to establish grass pitches by South Australian Soccer failed it became the Rowley Park Speedway between 1949 and 1979. It was closed because of complaints from residents about noise and traffic problems.

(<http://www.speedwayandroadracehistory.com/adelaid-rowley-park-speedway.html>)

A loss though, to those who followed speedway race and roar and enjoyed the flying dust or mud, and who loved the smell of burning methanol in their noses on a hot summer Friday night in Brompton.

In Sustainable Urban Renewal, Lake Rowley Park would facilitate drainage from built environments, mitigate floods and potentially be a groundwater recharge site. It could host Greenspace as well as new three to four storey adobe (mudbrick) style, north facing, low energy housing apartments, adjacent to the lake and backing the walls of the old clay pit. However it was filled in the 1990s.



# UPC Dwelling Strategy

## URBAN DWELLING OPTIONS

UPC 1984

### PRINCIPLES

1. Permaculture - work with Nature
2. Ecological Architecture
  - Passive solar design
  - Energy efficiency
  - Soft technology
  - Recycle Wastes
  - Quality of life, Community, Culture
  - Biotecture
3. Community Self-Reliance

### Design Options

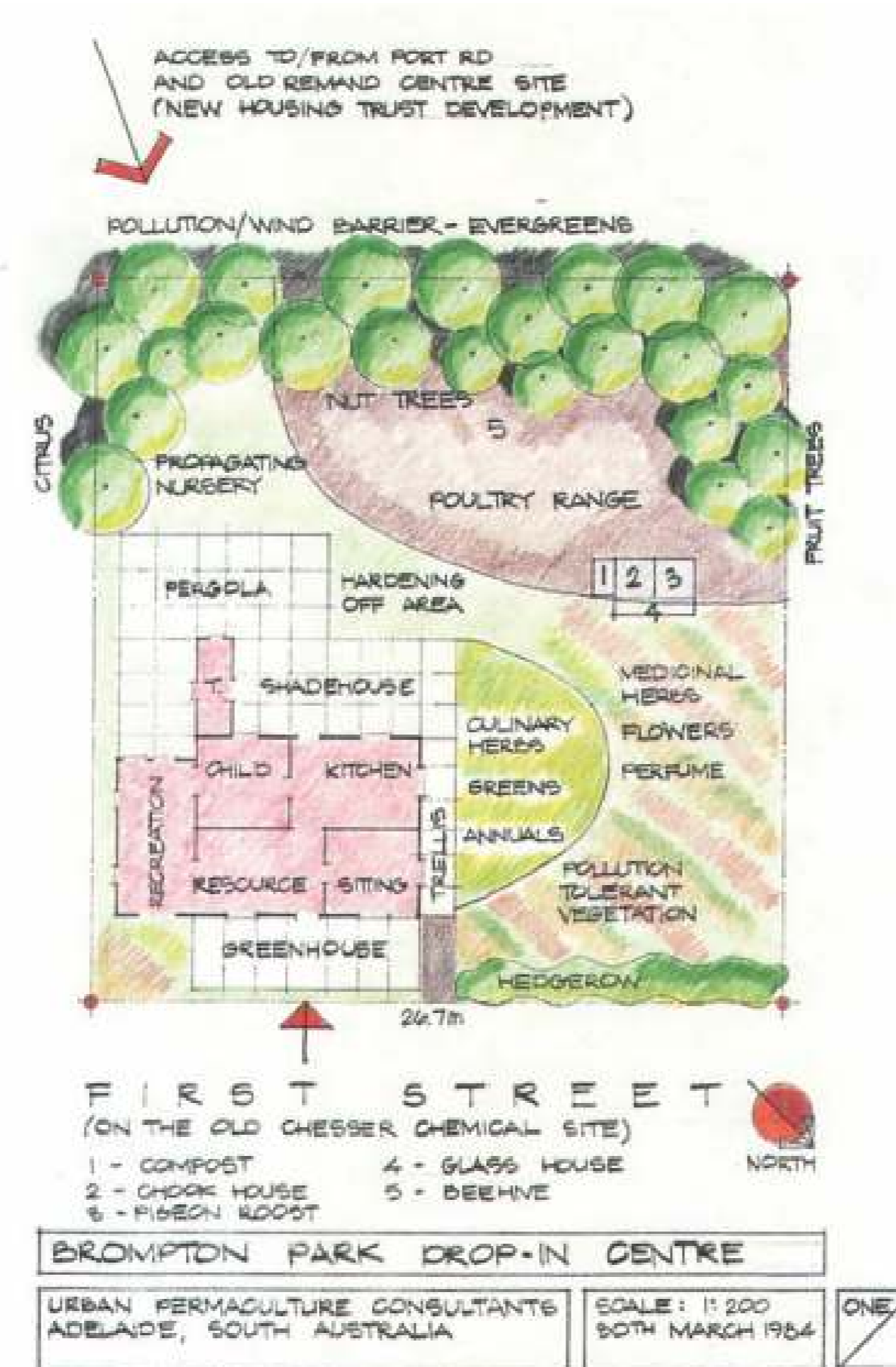
- Ecological Site Planning
- Appropriate North facing glass
- Insulation
- Thermal mass/heat sink
- Ventilation/cooling
- Soft technology
- Private/semi private external
- Mixed use zoning
- Direct access to Urban Forest
- Access to transport network
- Cooperative facilities

Between 1984 and 1985, UPC articulated a strategy for residential redevelopment in Bowden, Brompton and Ridleyton in *The Hindmarsh Pughole*, as well as in the monograph, *Sustainable Urban Renewal Urban Permaculture in Bowden, Brompton and Ridleyton* published in 1985.

An 'in progress' drawing by Paul Okamoto illustrates the proposed new Bowden Brompton Community Centre. It would host the Bowden Brompton Community Legal Services, Housing Services, Women's, Youth and Multicultural services, multiple project development incubators, be a link to the Hindmarsh Residents Association, the Hindmarsh Housing Association and the Permaculture Association of SA.

Adjacent are urban forest and city farm developments on old pughole sites on West and Green Streets.

Also included are low energy social housing, community based commerce, artisan workshops and green space sites linking ex-pugholes via pedestrian and bicycle tracks.



## Brompton Park Drop In Centre

Patrick Boyle Coglin, "the King of Brompton Park" laid out this subdivision in 1876 that created allotments of fifteen by ninety feet, with very narrow streets in between. He was a business man, a land speculator, a politician and was often embroiled in controversy. He had a high opinion of himself and his wealth.

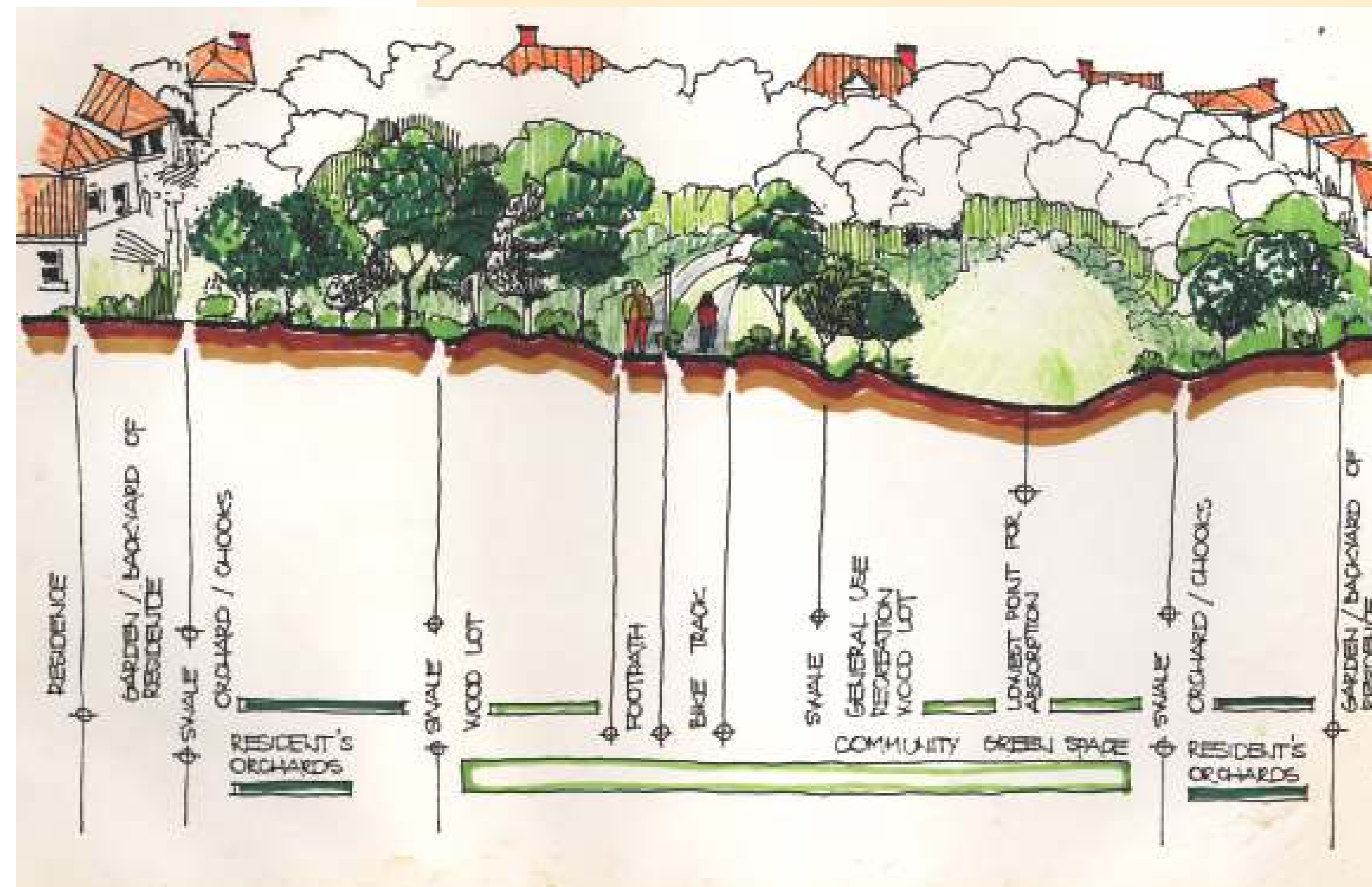
In rancorous debate in August 1887 where Coglin presided as Mayor of Hindmarsh, he was assailed with comments that Brompton Park was "a disgrace" and that, he "ought to be ashamed of it". (Parsons op cit p.138)

Residents had suffered this shame ever since and wanted redemption. Respect basically.

UPC met with residents from Brompton Park and were asked to visualise the development of a local Drop-in-Centre for immediate residents of that historical location. A site on First Street – the old Chesser Chemical Company – was available for redevelopment and was chosen for this. The addition of the Brompton Park Railway Station seemed reasonable.

The permaculture design features of a passive-reactive energy-efficient dwelling with a north facing greenhouse and a southern pergola with vines, to warm and cool the structure according to season. Also included are pollution barriers and windbreaks, fruit and nut trees, edible gardens, a poultry run and play areas for children.

Birdseye sketch of the Green Street Community Precinct integrated with social housing



## Urban Forest – Dwellings

A conceptual cross-sectional sketch of repurposed pughole sites that includes social housing, particularly housing cooperatives like the Hindmarsh Housing Association, built on adjacent stable land.

The pughole sites contain swales to drain the built environment and charge groundwater, plus urban forests of food gardens - chook runs - community orchards - woodlots - pollution buffers - recreation - bike paths.

Pughole Cross Section UPC 1984



## Hindmarsh Housing Association

In 1984 the Hindmarsh Housing Association (HHA) gained funding from the Local Government Community Housing Programme (LGCHP) through the Commonwealth State Housing Agreement, specifically for a Tenant Design and Building Program.

UPC facilitated the Association's Project Coordinator to engage mudbrick builder Chris Howe from Earthwerks at Mt. Pleasant, to provide the bricks and to supervise construction. Locals were employed during the projects.

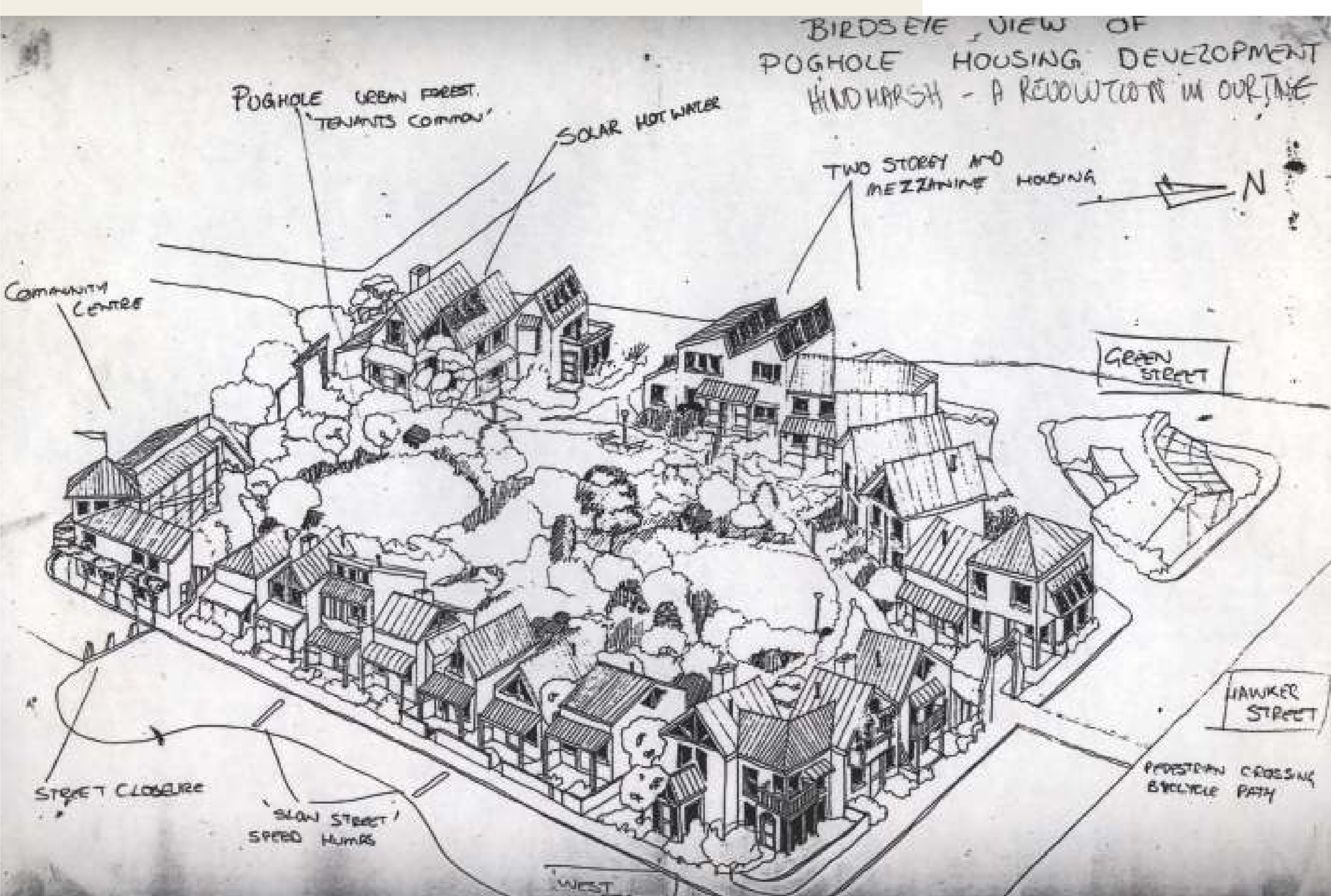
HHA earth built dwellings on Eighth and Ninth Streets Bowden

The earth dwellings between Eighth and Ninth Streets Bowden, built in the 1990s, are an example of a medium density (up to 3 storey), north facing, energy efficient mix of mudbricks and pise (rammed earth) social housing. It is adjacent to Emu Park – alas a non-edible scape.

Nevertheless it is a more quality project than the first three mudbrick dwellings between Ninth and Tenth Streets Bowden built in the early 1990's. Those faced budget constraints and suffered Council intransigence concerning north-facing dwelling frontage versus the street alignment.

A third HHA earth building project is in West Street Brompton but does not face north.

HHA earth built dwellings on Ninth Street, Bowden



# UPC Greenspace Strategy – Urban Forestry & City Farm

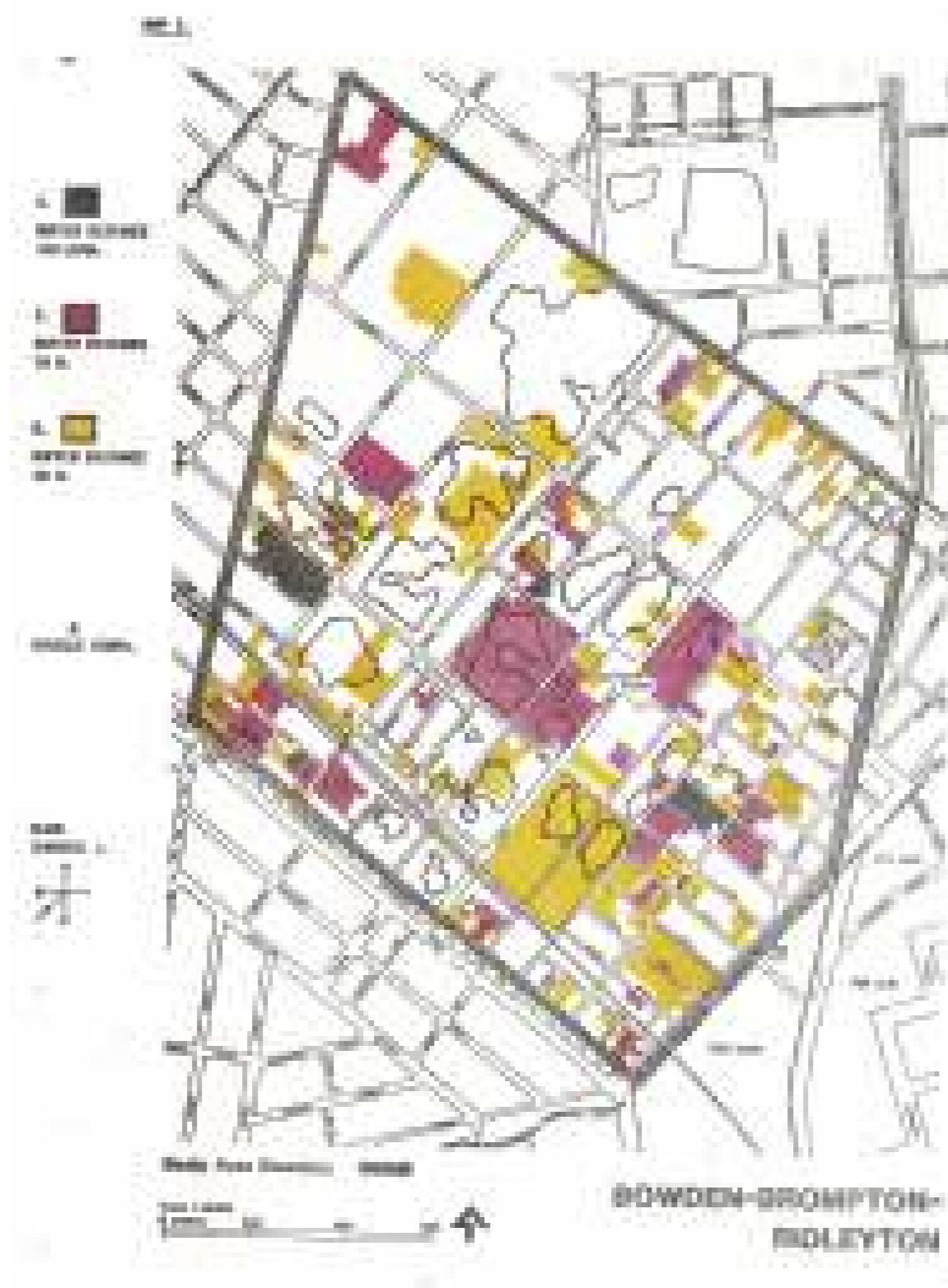
## Greenspace

This concept is to 'plant for our lives' (Richard St. Barbe Baker 1889-1982) via multiple permaculture techniques, particularly the idea of edible landscapes using polycultures of perennial plants. The aim is to build multi-functional urban green infrastructure on as much of the ex-pughole sites in the Study Area and beyond.

Urban Forestry as expounded by Dr. J.R.J. French (C.S.I.R.O. Melbourne. See *Sustainable Urban Renewal* p55 endnotes) extols the economic advantages, social aspects, the life support and environmental value and experience of urban forest projects globally.

The UPC philosophy is for much urban forest to be socially owned and managed by the community. Greenspaces would be linked via bike and walkways, contain orchards, mini-parks, provide natural drainage sites, grow microclimates to cool built environments, provide habitat for native animals and nature therapy for local humans.

Importantly urban forest would ameliorate wind pollution, a key problem in Hindmarsh in the 1980s.



## Pollution Sources in Hindmarsh in the 1980s

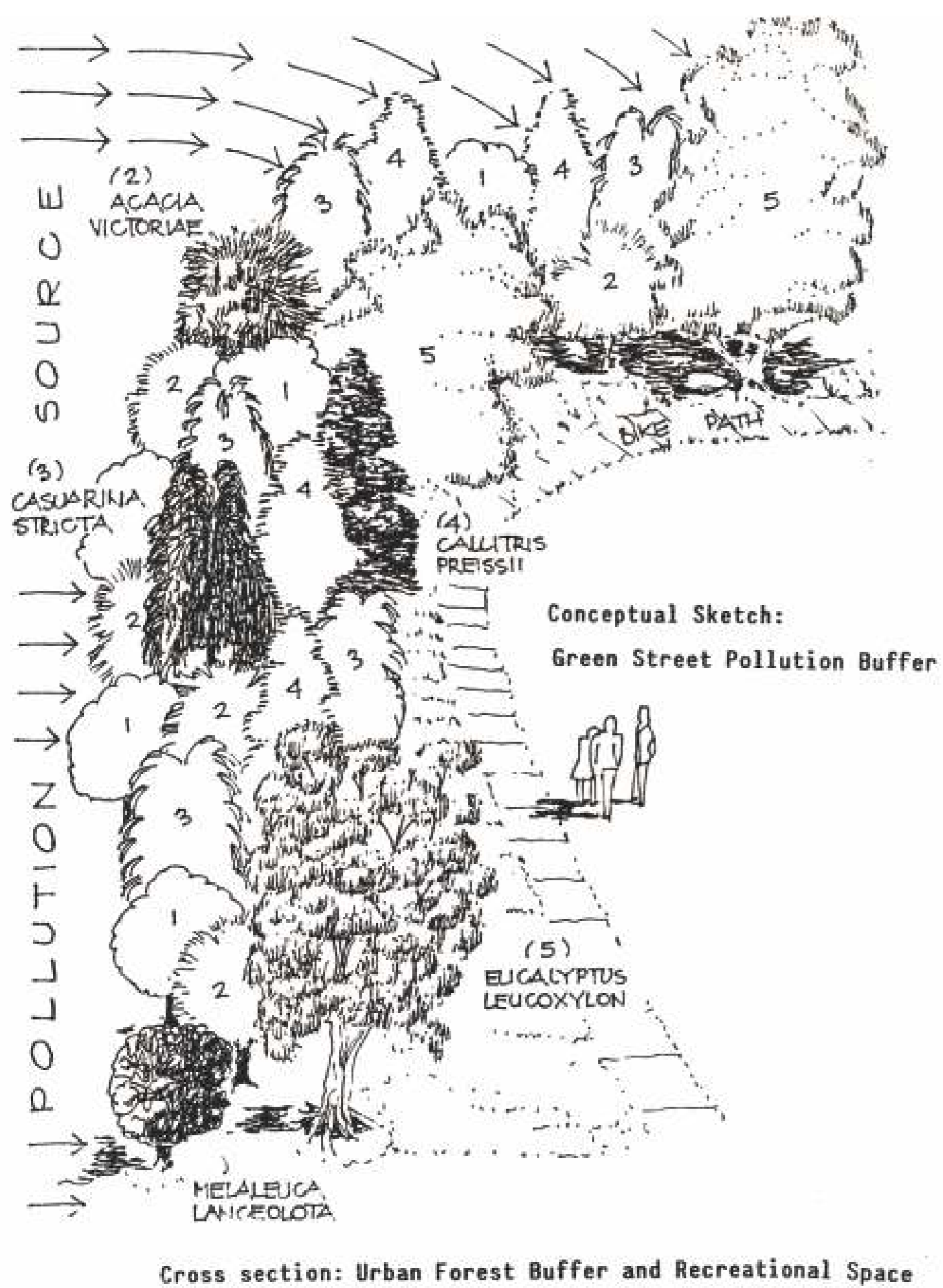
The map above devised by the Urban Permaculture Consultants (UPC) and contained in the Community Strategy Plan identifies significant sources of polluters.

In 1984 reports on health in the Inner Western suburbs of Adelaide emphasised aspects of mortality statistics showing that Hindmarsh "experienced substantially higher age sex standardised death rate than those applying for the State as a whole from 1969 to 1978 and in 1981." (Hayward, Helen. *Environmental Health In Hindmarsh* p. 2. Nb. A summary paper of four reports. Distributed locally, August 1984. HRA Community Archive)

The major pollutant sources were from motor vehicles and industry and included nitrogen oxides, carbon monoxide, smog, dust, smoke, fumes, gases and noise.

## Pollution Buffer

UPC designed a simple arrangement of local native plants to deal with air and particulate pollution material. Such plant structures would become part of urban forests on pughole sites and adjacent major and minor transport thoroughfares.



## City Farms

City Farms exist in advanced capitalist countries predominantly in underprivileged areas on unwanted wastelands. (eg. CERES Brunswick East, Vic is an expired stone quarry).

City Farms are multi-functional community controlled spaces, which are often permaculture information and resource centres. Activities that City Farms facilitate include:

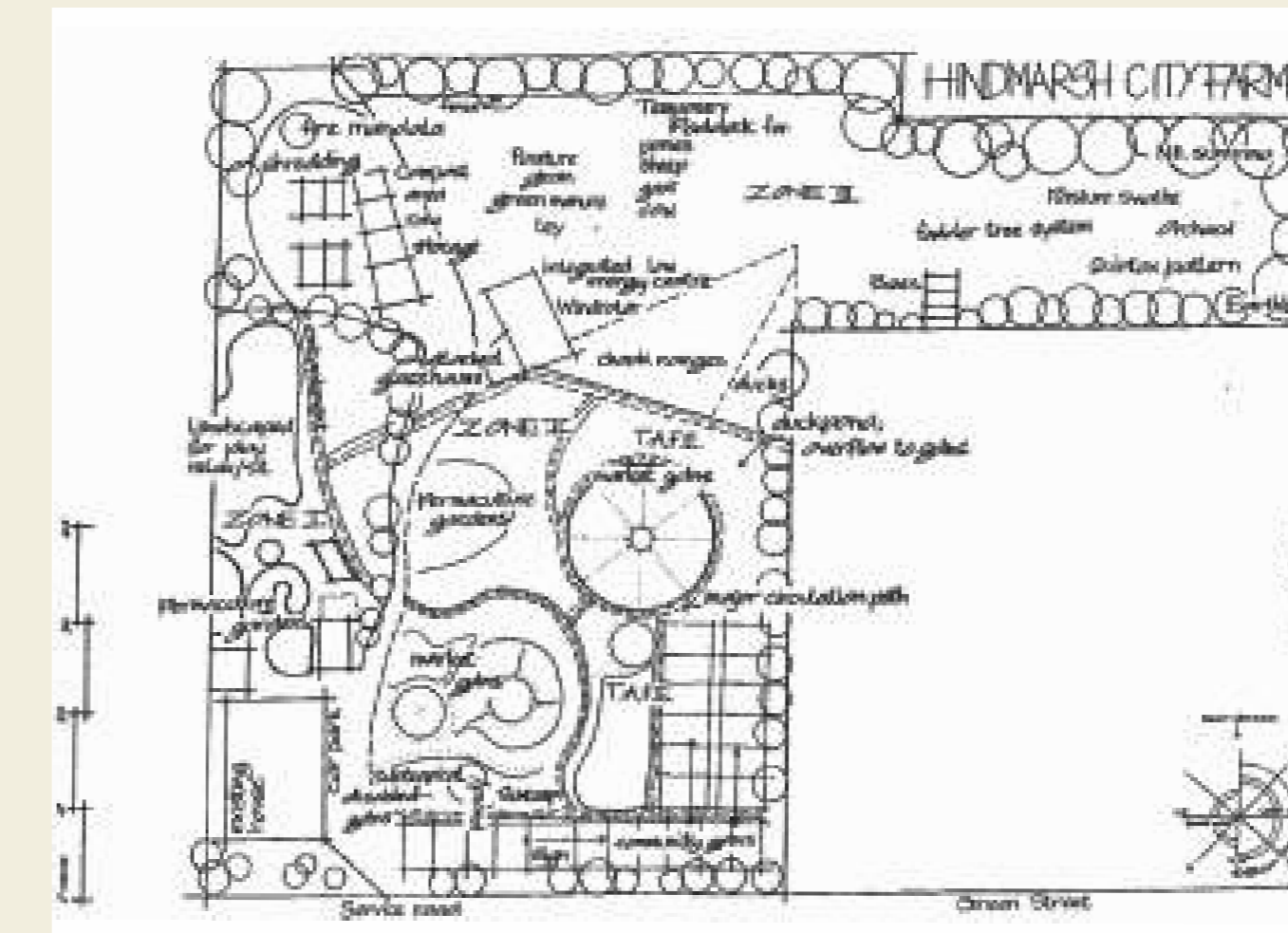
- Community Gardening & Market Gardening
- Urban Farming: Animal husbandry - chickens, rabbits, waterfowl, goats, sheep, cows, bees, equine, aquaculture
- Education & Training, Employment, Social enterprises, Library
- Plant Nursery/contracting, Soil Analysis Services, Gleaning operations, Money Self-Management/Land Access Consultancy, Energy Auditing Services
- Sustainability: Recycling programs, Seed Exchange, Information Technology,
- Social: Fun, Nature therapy.

## Hindmarsh City Farm

The Hindmarsh City Farm was incorporated as an Association in 1985 following a seminar in December 1984 which attracted over 70 attendees.

In January 1986 the Farm was sponsored by the Bowden Brompton Community Group and the Bowden Brompton Community Legal Service and successfully gained a \$100,000 grant from the Jubilee Youth Employment Program.

This was a youth training and development program for unemployed youth 15 - 8 years old. The Bowden Brompton Community Legal Service facilitated a peppercorn lease with the Hindmarsh Development Committee on behalf of the Hindmarsh City Farm, for the project to establish on the two acre filled pughole site in Green Street Brompton. An old worker's cottage at 17 Green Street served as farmhouse and office.



Hindmarsh City Farm - Site Plan 1987

As well as a media program youth trainees in the Jubilee Youth Employment Program undertook modules in Certificate 2 Amenity Horticulture from TAFE. They were also tutored by organic gardening guru Peter Bennett.

## "City Farm A Growing Revolution. The Ballad of Hindmarsh"

The Hindmarsh Pughole, Issue no. 42, September, 1986. p6.

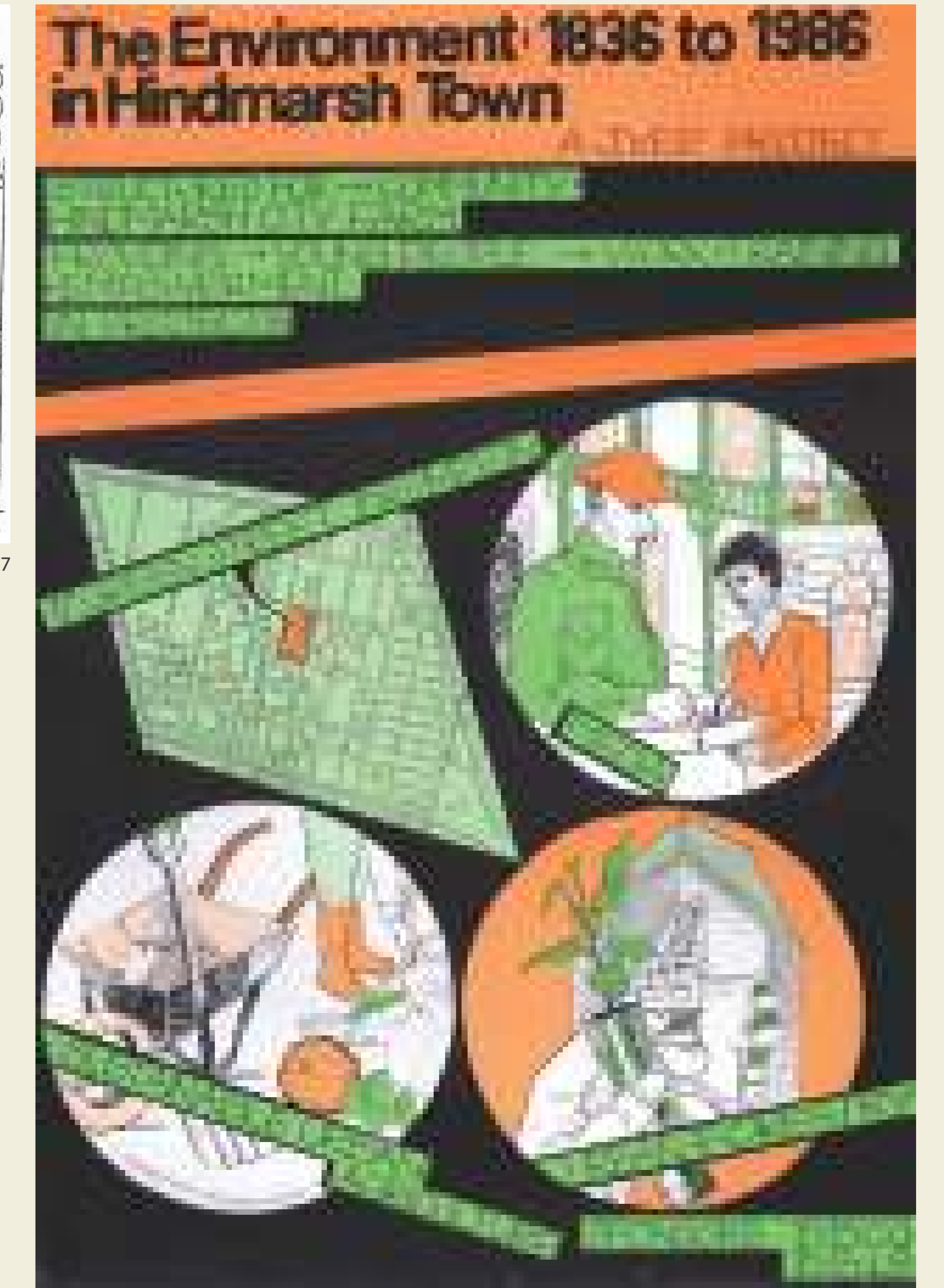
When the Springtime rolls round, there'll be life in the ground.  
Small shrubs, tiny seedlings and trees,  
With sweat and with care, we will clean up the air,  
And plant lots of flowers for bees.

And perhaps by the sun, or by the light of the moon,  
When a spirit of Kauma glides past,  
It might listen and sigh, "Oh sweet land of mine,  
They are treating you properly - at last."  
HCF Media Team

These young people built the farm for the local community to use once the Youth Employment Program money expired. Further funding was obtained in 1987 and 1988 allowing around 50 local youth to benefit from six months of employment over three years. There were also significant adult staff, trainers, mentors, volunteers and visitors keen to get down on the farm.

## Brompton Community Garden

Between the early 1980s and 2022 there has been much change in Bowden, Brompton and Ridleyton. The Hindmarsh City Farm no longer exists but the Community Garden in Green Street Brompton is well loved and supported by locals.

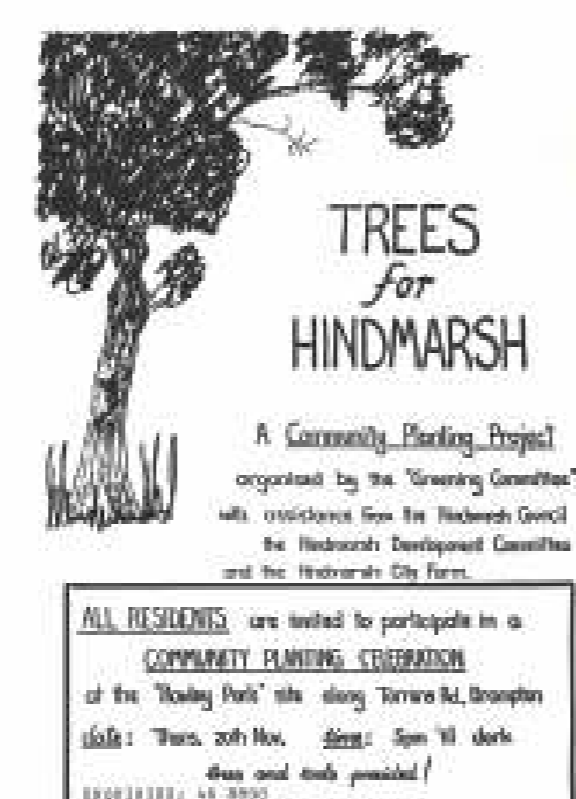


## 'DOWN ON THE FARM' EDITORIAL - ADVERTISER

Tuesday 22nd July 1986

"It would be easy to be cynical with such trendy sounding ideas; and there is something almost subversive in such an idea's standing up bravely against our industrialised culture and materialist urban lifestyles. But it is an experiment with some genuine and needed rationales."

## Hindmarsh Greening Committee Genesis



### AGENDAS

August 1986 who/what/where/when  
• Composition and Responsibilities

January 1987 Membership and structure  
• Greening of Hindmarsh Draft Plan  
• Rowley Park Community Planting Project

Greening Committee is Hindmarsh Council, Hindmarsh Development Committee, Hindmarsh City Farm



# Credits & Acknowledgements

## From the Author:

Thanks go to:

- Viv Streeter, Chairperson of the HRACAG Inc for her encouragement, feedback and support throughout the development of this project,
- the Committee members of the Community Archive Group whose work to preserve and digitise the records of the residents' history in Hindmarsh from the 1970s, makes the telling of the stories possible.

Finally, thank you also to the community of Bowden, Brompton and Ridleyton in the day, without whose actions there would be no story.

– Colin Ball, April 2022

The contents of the *Hindmarsh Redevelopment & Community Strategy Plan in the 1980s* exhibition was curated out of material from personal collections as well as the collection of the Hindmarsh Residents Association Community Archive Group.

The Hindmarsh Residents Association Community Archive Group would like to thank the City of Charles Sturt for their financial support in this exhibition.

Curated and written by Colin Ball

Panels design and layout by Cecilia Lim

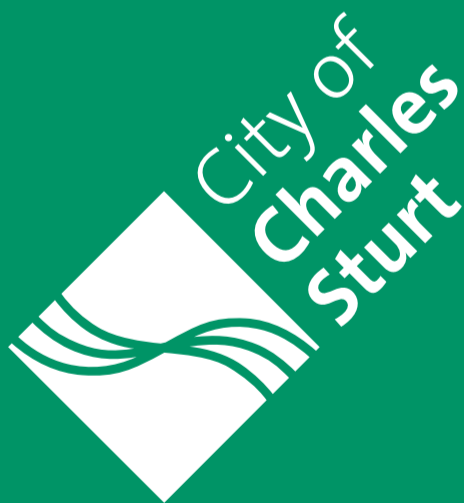
Panel printing and production by Norwood Kwik Kopy

# Hindmarsh Redevelopment & the Community Strategy Plan in the 1980s

Presented by

Hindmarsh Residents Association  
Community Archive Group Inc.

Supported by



---

*We acknowledge the Kurna people, the  
traditional owners of this land, and we pay our  
respects to Elders past and present.*