

PARHAM AND DISTRICT ACTION GROUP (PADAG)

The PADAG team have been very focussed on the construction of the interpretative centre at Port Parham using a grant from the Commonwealth Government Drought Communities Programme.

The shelter has been constructed, and a working bee in December resulted in the original Jinker being placed and secured and framing put in place for signage. Considerable work has been done with the Dublin History Group to obtain and collate historical data suitable for the history signs. This was completed and put in place by Original Signs in the week before Christmas and has created significant interest by locals and visitors.

More work will be done over the next few months to complete the exercise including the provision of additional signage, the relocation of the jinker and improvement of the display to make it more prominent, the provision of a picnic setting, and the placement of blue metal around the edge of the building. Adelaide Plains Council will reconstruct the CFS access track around the centre.

The Port Parham and Webb Beach Community Plan is an active document which will be upgraded on a regular basis. A resident attended the most recent meeting of

(Continued on page 15)

History of Port Parham and Webb Beach

The Port Parham and Webb Beach Community Plan is an active document which will be upgraded on a regular basis. A resident attended the most recent meeting of

Port Parham as a Port

The Port Parham and Webb Beach Community Plan is an active document which will be upgraded on a regular basis. A resident attended the most recent meeting of

Recreation

The Port Parham and Webb Beach Community Plan is an active document which will be upgraded on a regular basis. A resident attended the most recent meeting of

Community

The Port Parham and Webb Beach Community Plan is an active document which will be upgraded on a regular basis. A resident attended the most recent meeting of

Unique

The Port Parham and Webb Beach Community Plan is an active document which will be upgraded on a regular basis. A resident attended the most recent meeting of

Proof Range

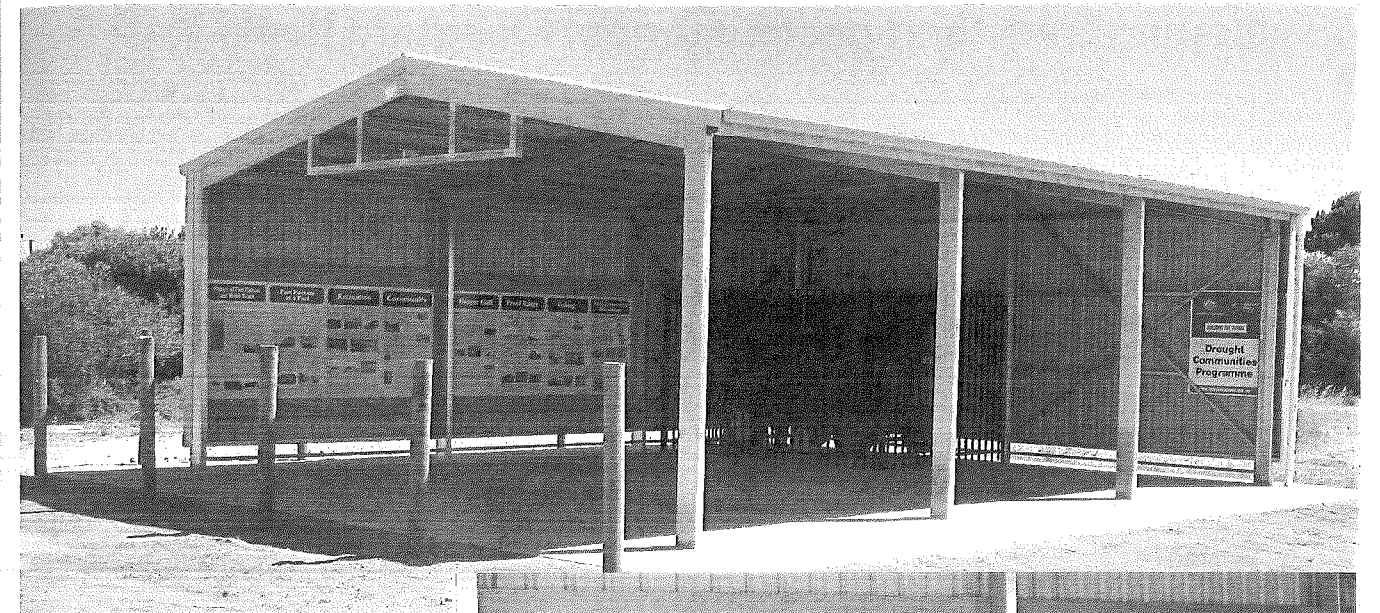
The Port Parham and Webb Beach Community Plan is an active document which will be upgraded on a regular basis. A resident attended the most recent meeting of

Fishing

The Port Parham and Webb Beach Community Plan is an active document which will be upgraded on a regular basis. A resident attended the most recent meeting of

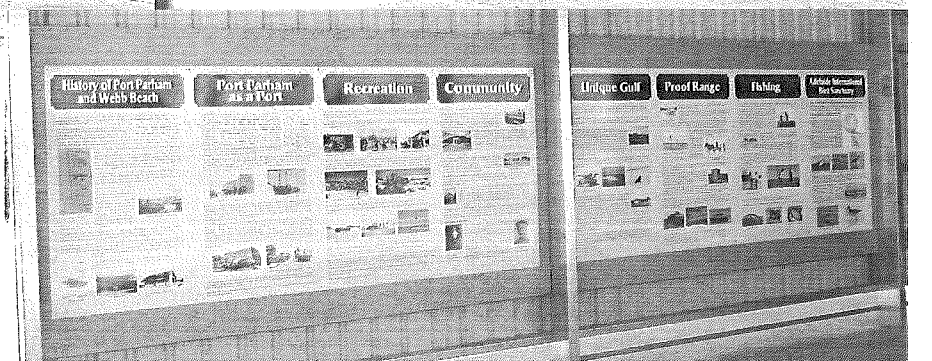
Adelaide International Bird Sanctuary

The Port Parham and Webb Beach Community Plan is an active document which will be upgraded on a regular basis. A resident attended the most recent meeting of



PADAG and made some very useful suggestions for updating the plan. It is hoped to be able to present the plan to the January meeting of the Adelaide Plains Council.

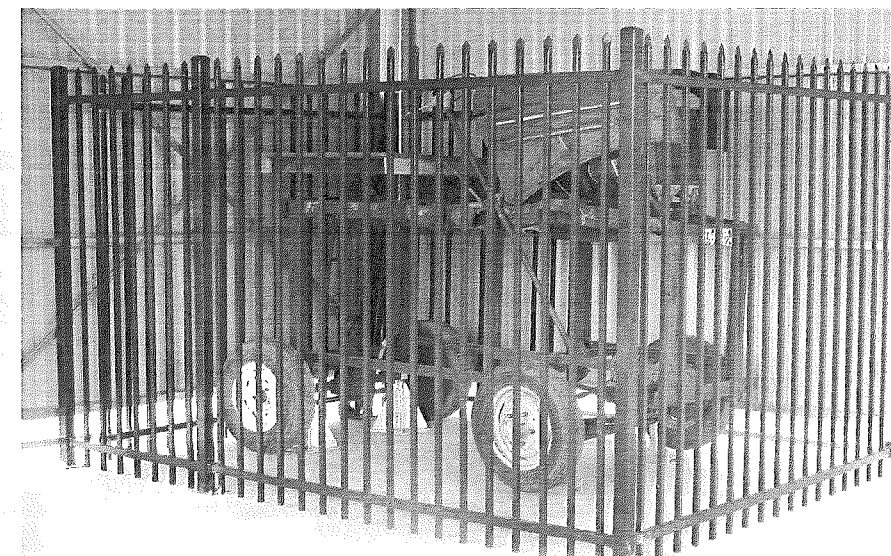
PADAG is actively involved in communicating with Adelaide Plains Council on proposed variations to the "Short Term Accommodation Policy" which impacts on how the Parham Camp Ground is managed. This is particularly important as the Council has a grant to upgrade the ablutions facilities at the camp ground which includes the provision of showers. This will almost certainly result in a charge being levied for camping at the camp ground, and an important issue is how this would be done and how the funds resulting



from these charges are managed.

All members of the community are welcome to attend meetings of the Parham and District Action Group and contribute to the development of facilities in the community. Meetings are normally held on the second Tuesday of the month at 7pm at the Port Parham Sports and Social Club. The next 2 meetings are 9th February and 9th March 2021

Alvin Jenkin
Secretary



The First Parham Jinker
(c 1967)
"The Bobmobile"

Developing trade and port histories: Mosquito fleet - Part 1

Introduction

South Australia's mosquito fleet of small coasting ships played a significant role in the state's development, trading with the remote communities along the coast, daring to beach in isolated bays in pursuit of the small cargoes the larger ships ignored. They also served as lighters to the overseas ships, carrying cargo from smaller ports and trans-shipping from wharfs and jetties to ships moored in deep water. As the years passed they competed with the steamers because they were cheaper to operate, but eventually the times and the age of the little ships told against them. Customers wanted assurance of pick up and delivery to a schedule. The last of South Australia's mosquito fleet were withdrawn from service in 1982.

The mosquito fleet consisted of cutters, ketches, schooners and brigantines. They carried any cargo to wherever was required, within reason. They were economical, particularly with 'low-value bulk cargoes, such as stone for bridges, roads and railways' (Parsons, page 175). With low running costs, and often minimal manning, the ketch trade operated long past the advent of road and rail transport, and the introduction of coastal steamships. Expert seamanship was needed as was hard muscle to load and unload the vessels.

The Casuarina was the first small vessel to operate in South Australian waters, but as an exploring vessel not a trader. It was part of the French expedition of Nicolas Baudin and surveyed the South Australian gulfs. The following year, 1803, the vessel Independence, 30 tons, was built on Kangaroo Island by the crew of the American ship Union. It appeared in Sydney in June 1805, but beyond that nothing is known of the vessel.

First coastal traders

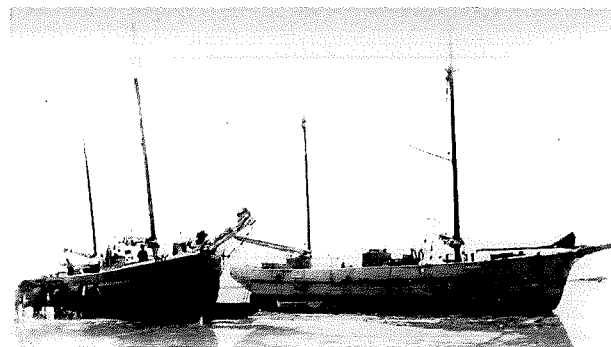
When the first settlers arrived in South Australia in 1836, a cutter was chartered by the South Australian Company from Tasmania. The William was about 30 tons and remained with the Company until it was wrecked in Yankalilla Bay in August 1838. The Mary

Ann and Waterwitch were also employed by the South Australian Company in the late 1830s. Over the next three years the fleet of small ships grew by three or four a year, and began the history of service to the outlying communities. At a period when roads were barely tracks, or were totally non-existent, the mosquito fleet carried not only cargo and provisions, but people. They carried the stone for building roads and wharfs, the timber for jetties; they carried the grain from the first harvests along the Fleurieu Peninsula, and they travelled to Victoria and Tasmania to bring back vital supplies for the growing colony.

In size they ranged from 30-100 tons, although the tiny Petrel of 13 tons, and with a crew of two, carried passengers to Melbourne. As jetties were built and ports developed along the coast the ketches proliferated. Despite the large ocean-going ships delivering and collecting cargo from the main ports in the gulfs, the ketch fleet served the far west coast and the south-east of the state where these ships did not venture. Life was hard in these small craft and these distant coasts were exposed to the weather: many ketches and cutters left port never to be heard of again-swamped by large seas, or wrecked on a deserted shore. As the 20th century advanced, in an endeavour to keep pace with the coastal steamers, many ketch captains installed auxiliary engines. Time was more pressing in the new age and merchants wanted schedules that were adhered to. A number of the ketches were called to service during World War II, carrying supplies and ammunition in northern Australia and the South West Pacific.

Part Two March - April Dublin Dispatch

<https://www.samemory.sa.gov.au/site/page.cfm?u=680>



9 Sixth Street (Corner First and Sixth Street), Dublin

DUBLIN HISTORY GROUP RESEARCH CENTRE



Contact. 8529 2028 or 8529 2030
www.dublinhistorygroup.com.au

First Open Day for 2021

On the first Open Day, Sunday 10th January, it was lovely to have two visitors Leanne and Scott Davis. Leanne is related to John Parham of Port Parham fame as well as a few other families around the district, also having a connection to one of our WW1 soldiers, Private Henry Charles Ellis Rundle. Leanne was quite moved by the plaque and tree planted to remember him. She also will have another connection to the area soon but more about that later. Scott was feeling a little left out but we did find a connection to the area for him as well. We look forward to them coming back for some further research soon.

Windsor Church Donations

With the sad closure of the Windsor Uniting Church the DHG have been honoured by the donation of some special items from the church, (photo right). There is also an electronic organ with an interesting history. We are happy to share the story of this wonderful local church and it's 137 year history. These items will be part of the Churches display at the Dublin Institute.

Open Days and Events in 2021

Open Days

Sunday 14th February, 1.00pm

Sunday 14th March, 1.00pm

Up Coming Events

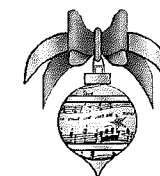
Car Boot Sale in March

SA History Festival in May

Research Focus 2021

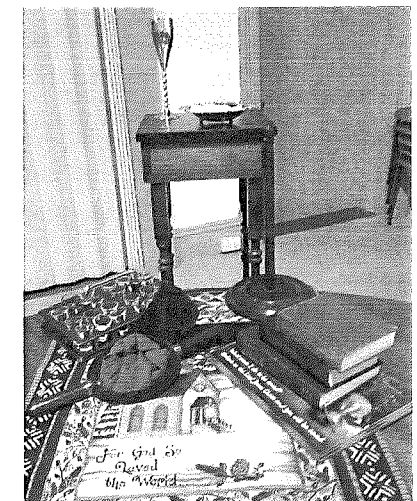
Parham (Port)

and World War Two Personnel



Carols at the Institute

It was regrettable having to cancel our plans for a carols night last year, but having had such a great response, we are definitely planning to hold it this year, so in December 2021, you will be welcome to share some carols and maybe come to a Christmas Market. We will let you know as soon as we firm up a date.



PO Box 60 Dublin SA 5501 Email: info@dublinhistorygroup.com.au

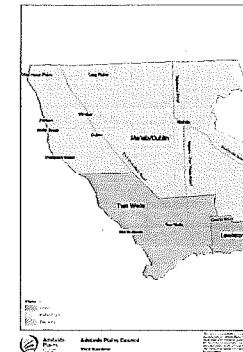
www.dublinhistorygroup.com.au www.facebook.com.au/dublinhistorygroup

Dublin History Group Inc. Meetings 2021

Monday January 18 th	Monday July 19 th	Annual General Meeting
Monday February 15 th	Monday August 16 th	
Monday March 15 th	Monday September 20 th	
Monday April 19 th	Monday October 18 th	
Monday May 17 th	Monday November 15 th	
Monday June 21 st	Monday December 20 th	

Legend for front cover

1. Mallala Oval on Sunday 26th January 2020 Breakfast catered by Adelaide Plains Council and the Mallala Lions Club. Photo courtesy of Adelaide Plains Council
2. January Sunday 26th CFS Gala Day held at Mallala Primary School oval was a great success. All funds raised on the day this year were given to the Pinery Memorial Fund. A "cricket match" enjoyed between Dublin, Mallala, Two Wells CFS Brigades and Grace Plains Farmers Team. Some Dublin Team members donning their green skirts & leprechaun hats
3. Mallala and Districts Reunion Committee for 2020 from top left - Tom Varcoe, Greg Tucker, Paul Angus, Ed Manning, Maxine Varcoe, Joy van der Hoek, Cathy Angus, Bev Manning, Maureen South and Marie Adams.
4. 20th March 2020 COVID - 19 locks down Australia
5. Congratulations to the recipients of the Two Wells Community Fund Round 3 recipients. , St Paul's Anglican Church (Hon. John Dawkins MLC presented the cheques, with APC Mayor, Mark Wasley and from Hickinbotham, Ruth Vagnarelli were in attendance .
6. Great news from the Mallala Museum after a successful fundraising appeal the replica of the towns original fire station is now in place. It will be the future home of the REO Fire engine.
7. Meet Your Local MP's October 18th - Sitting on Jinker Rowan Ramsay MP and Mayor Mark Wasley L-R on ground: Jeff Thomas, Thompsons Beach: Philip Brow (kneeling) , Dublin, (President Dublin History Group): Greville Knight, Mallala (Public Officer CCC), Caroline Billing, Webb Beach: Anne Moroney, (on jinker step) Regional Development Australia Barossa: Alvin Jenkin Port Parham, John Lush, Chair of Coalition of Coastal Communities Pat Thompson, Dublin:: Sid Fiedler, Dublin: and Fraser Ellis MP. Absent are Dennis Bryan, Webb Beach: John Drexel, Middle Beach, Colin Makins, Port Parham: Eddie Stubing TWRAT (representing Port Gawler): Steve Jones, Thompson Beach
8. But on a local level however, the Dublin Cricket Club has benefitted from a Federal grant, passed on through the Adelaide Plains Council, to erect brand new clubrooms and pavilion which will hopefully be completed during the '20/21 cricket season. The grant was a part of the Drought Relief Program
9. Last Service of Windsor Church 25th October - Gwen Secomb responding to Brian Parker
10. The Dublin History Group finally was able to present "Churches and Chapels" in August 2020



COUNCILLOR CONTACT INFORMATION

Mayor Mark Wasley 0456 939 376

Mallala / Dublin Ward

Deputy Mayor
Cr. Marcus Strudwicke 0407 392 191
Cr. Terry-Anne Keen 0407 971 022
Cr. John Lush 0417 809 785

Two Wells Ward

Cr. Kay Boon 0421 163 920
Cr. Frank Maiolo 0418 890 405
Cr. Joe Daniele 08 8520 2233

Lewiston Ward

Cr. Brian Parker 0417 724 223
Cr. Margherita Panella 0416 020 777
Cr. Carmine Di Troia 0421 808 362

Adelaide Plains Council's Cemetery Locations

Barabba Cemetery, 884 Tank Road, Barabba
Dublin Cemetery, 92 Harris Road, Dublin
Feltwell Cemetery, 223 Feltwell Road, Mallala
Grace Plains Cemetery, 7 Nairne Road, Grace Plain
Shannon Cemetery, 293 Rowe Road, Calomba
Two Wells Cemetery, Town Centre, Old Port Wakefield Road, Two Wells
Mallala RAAF Cemetery, 223 Feltwell Corner of Old Dublin Road & Hill Road
Mallala Catholic Cemetery, Franks Road, Adelaide Plains Council Cemetery Register - <https://www.apc.sa.gov.au/page.aspx?u=948&c=11297>

Adelaide Plains Council Contact Information

COVID-19 Hours or services may vary
Principal Office - Mallala

Monday to Friday, 9am to 5pm (except public holidays)
2a Wasleys Road, Mallala SA 5502
Postal: PO Box 18, Mallala SA 5502
Tel 08 8527 0200
Fax 08 8527 2242
Email info@apc.sa.gov.au

Two Wells Service Centre

Monday to Friday, 9am to 5pm (except public holidays)
69 Old Port Wakefield Road, Two Wells SA 5501
Tel 08 8520 3360
Fax 08 8520 2375

Mallala Depot

Monday to Friday 9am to 5pm (except public holidays)
21 Aerodrome Road, Mallala SA 5502
Tel 08 8527 0200
Fax 08 8527 2490

Two Wells Public Library

61 Old Port Wakefield Road, Two Wells SA 5501
Tel 08 8520 2100
Fax 08 8520 2235
Monday: CLOSED
Tuesday: 9am - 5pm
Wednesday: 12pm - 7pm
Thursday: 9am - 5pm
Friday: 9am - 5pm
Saturday: 9am - 11.30am

Mallala Branch Library

Redbanks Road, Mallala SA 5502
Tel 08 8527 0205
Wednesday: 10am - 12pm
Friday: 3pm - 5pm

Windsor Branch Library

Windsor Institute,
Old Port Wakefield Road, Windsor SA 5501
Refer Two Wells Public Library
8520 2100 during opening hours